

Axial Piston High Pressure Pump For Seawater

HPS Series

- HPS 0.6~1.0
- HPS 1.5~3.5
- HPS 5.1~10.2
- HPS 11~13
- HPS 16~21
- HPS 22~39



THINKTANK



Specification - HPS 0.6~1.0

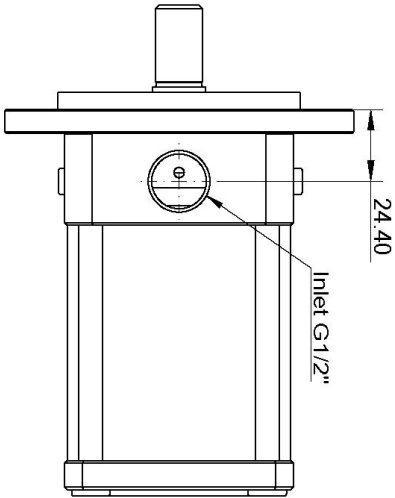
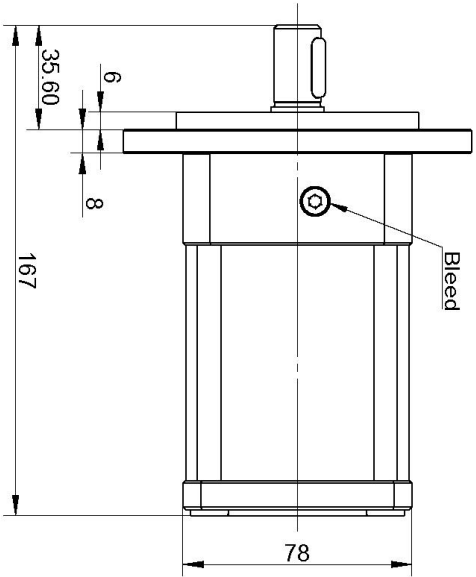
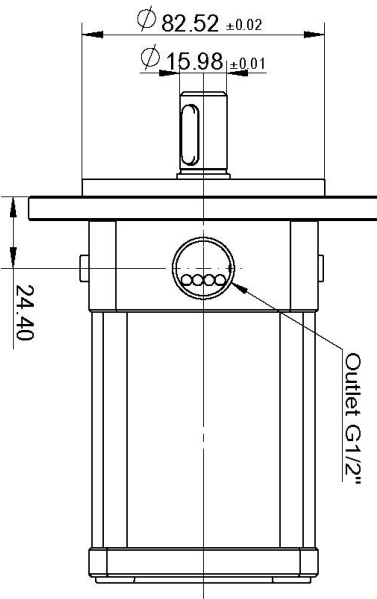
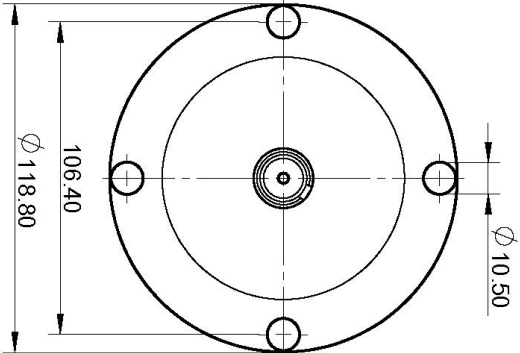
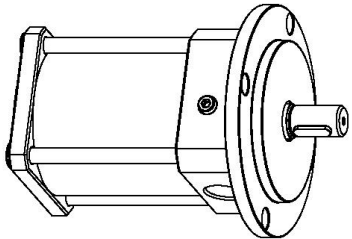
Pumps Model	0.6	0.8	1.0
Code Number	TT010200201	TT010200202	TT010200203
Displacement (cc/rev)	4.07	5.08	6.3
Housing Material	2507	2507	2507
Min. Outlet Pressure (barg)	20	20	20
Max. Outlet Pressure (barg)	85	85	85
Inlet Pressure Continuous (barg)	0.5-5	0.5-5	0.5-5
Min. Speed,Continuous (rpm)	700	700	700
Max. Speed * (rpm)	3500	3500	3500
Flow Rate (m ³ /H) (85barg,700 rpm)	0.12	0.17	0.22
Flow Rate (m ³ /H) (85barg,1000 rpm)	0.22	0.29	0.36
Flow Rate (m ³ /H) (85barg,1200 rpm)	0.25	0.33	0.42
Flow Rate (m ³ /H) (85barg,1500 rpm)	0.34	0.43	0.54
Flow Rate (m ³ /H) (85barg,1800 rpm)	0.40	0.52	0.65
Flow Rate (m ³ /H) (85barg,2500 rpm)	0.58	0.75	0.94
Flow Rate (m ³ /H) (85barg,3000 rpm)	0.71	0.91	1.14
Flow Rate (m ³ /H) (85barg,3500 rpm)	0.83	1.06	1.32
Calculation Factor (at maximum speed)	496	509	512
Motor Selection (KW) (Maximum pressure, maximum speed)	2.2	3.0	4.0
Media Temperature (°C)	2~50	2~50	2~50
Sound Pressure Level (dB) **	74	74	74
Weight (kg)	3.6	3.6	3.6
Integrated Flush Valve	YES	YES	YES

* At maximum speed, the inlet pressure must be at least 2 barg;

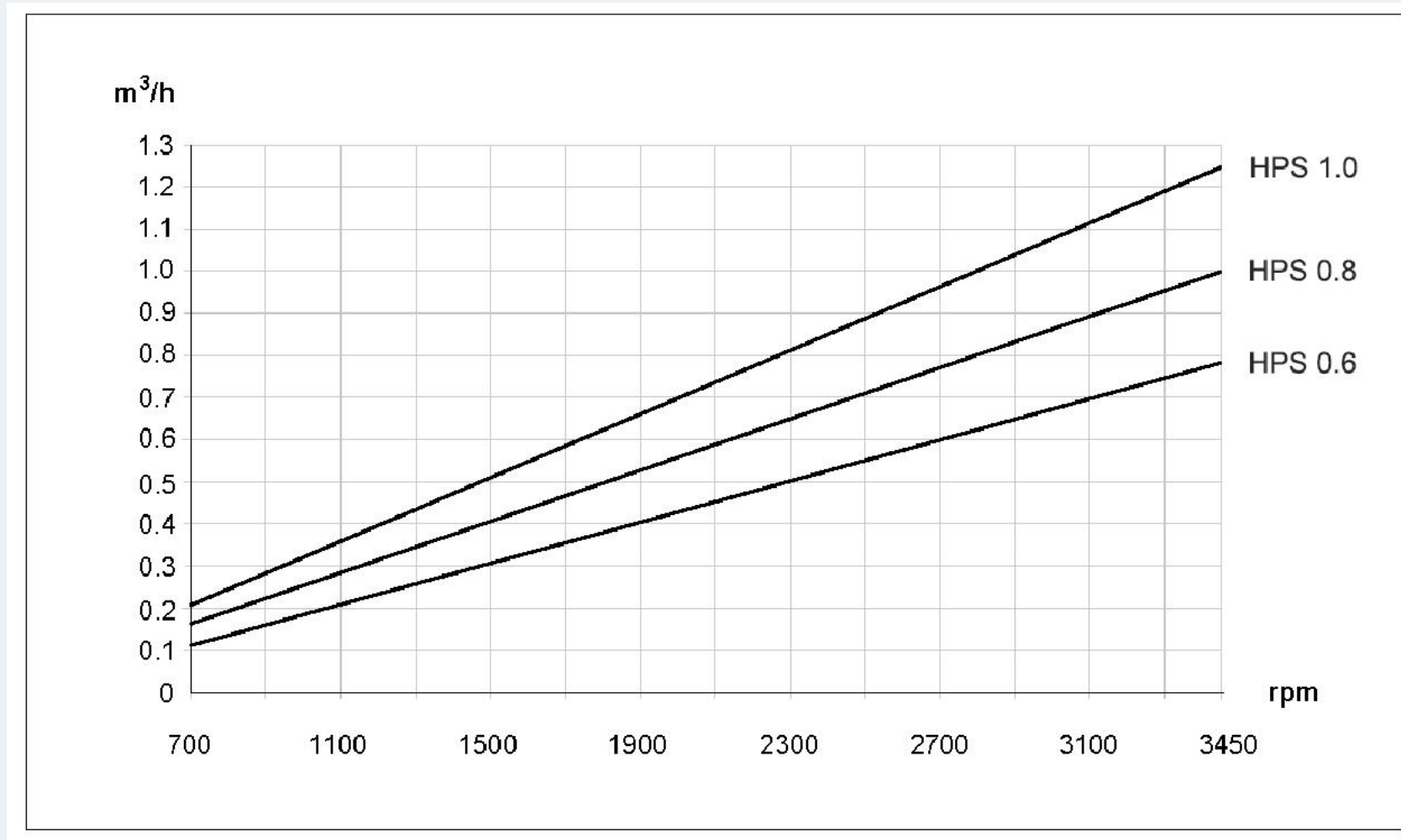
** Sound Pressure Level: Calculated according to EN ISO 3744: 2010 / dB(A) [LPA, 1m], when driven by a motor and operating at maximum working pressure and speed.

Installation Dimensions (HPS 0.6~1.0)

Parallel Key	5*5*20 (DIN6885)
Bleed	M5*8
Inlet Port	G 1/2" (T Port)
Outlet Port	G 1/4" (P Port)

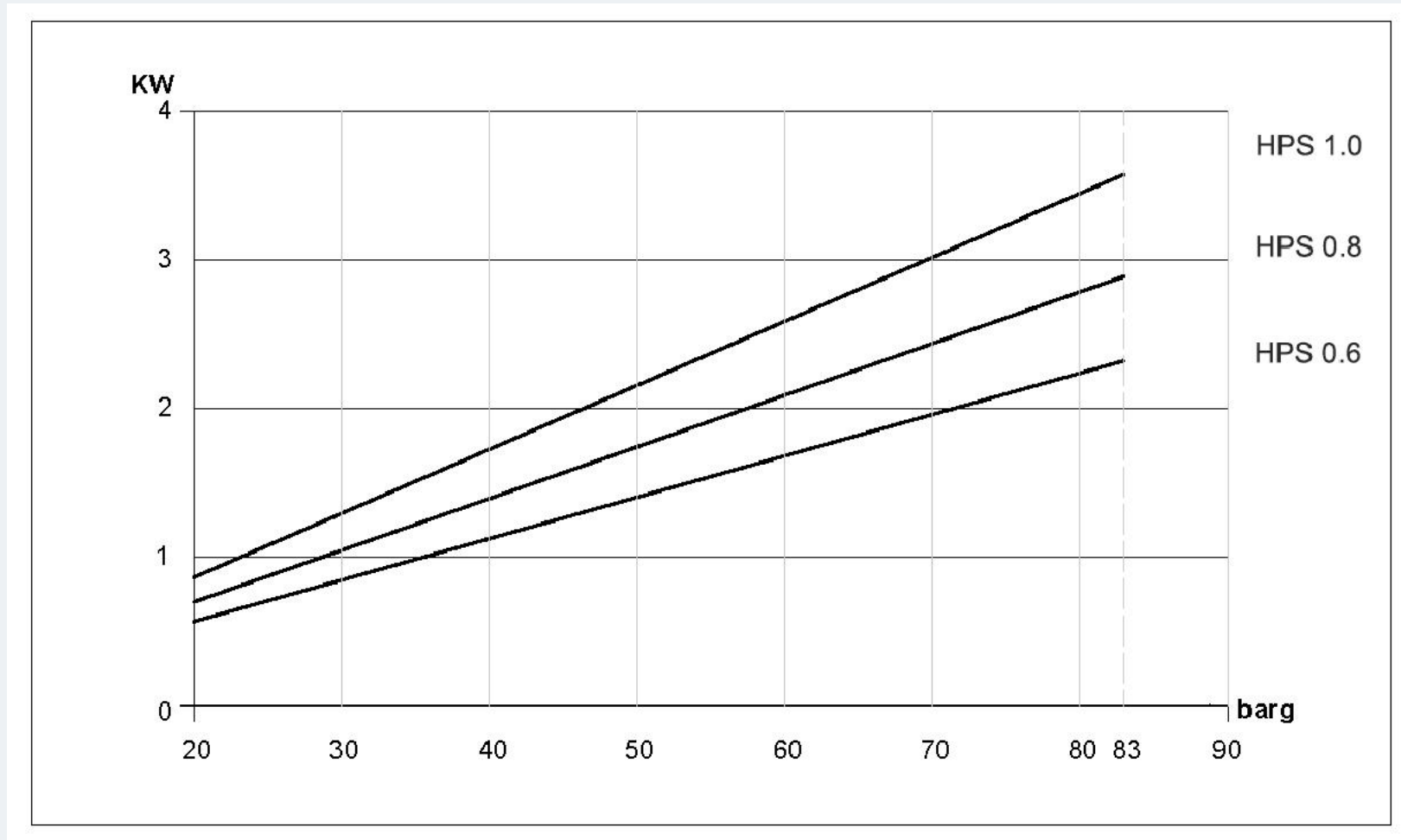


HPS 0.6~1.0 Typical Flow Curve at Maximum Pressure

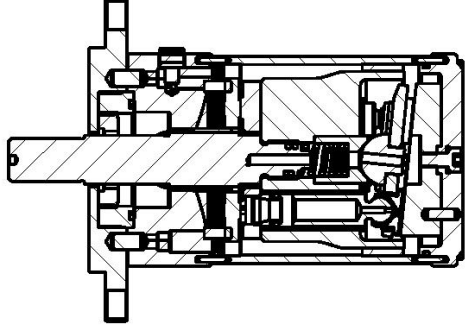
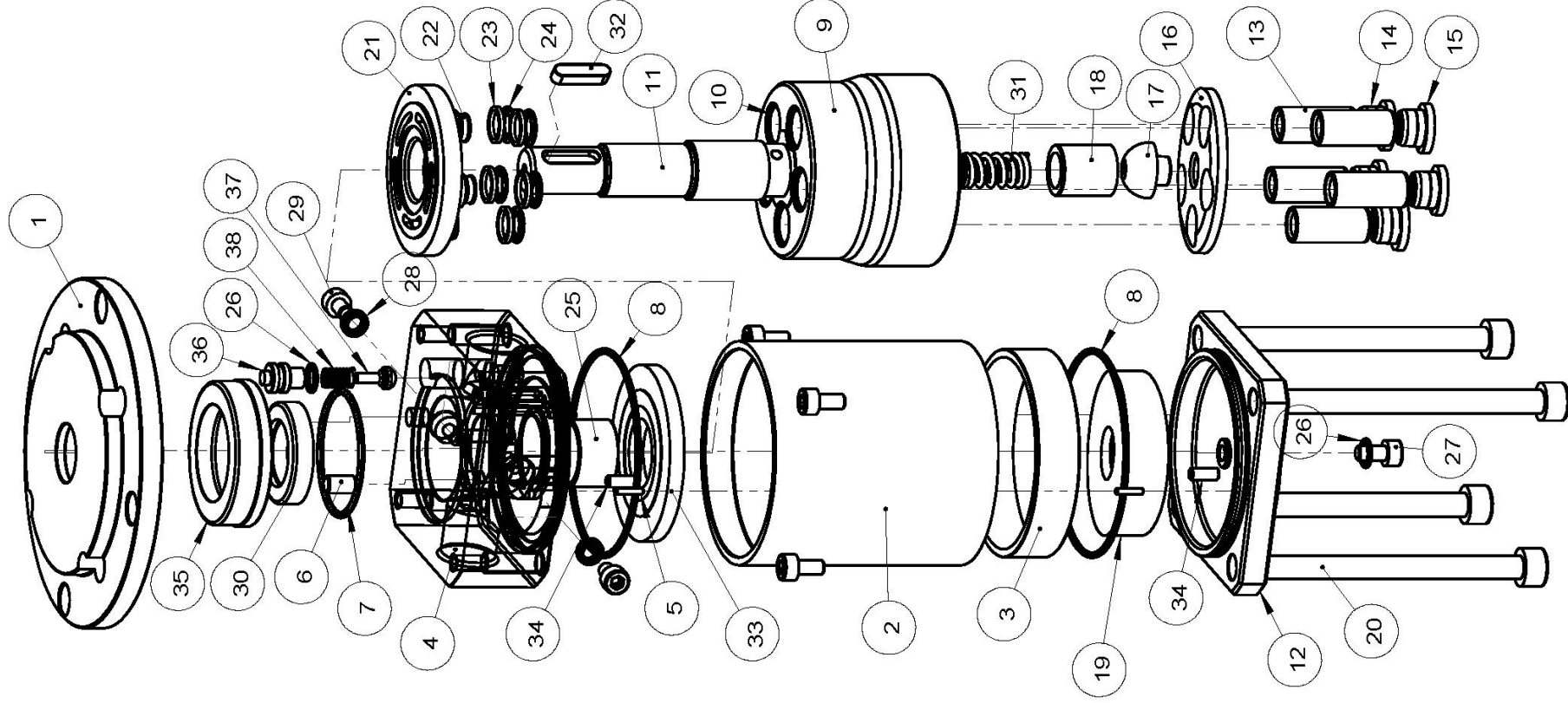


HPS 0.6~1.0 Motor Power Curve

Different Pressures at Maximum Speed



Drawing - HPS 0.6~1.0



No.	Parts	Material	Qty
1	Mounting Flange	2205	1
2	Housing	2205	1
3	Main Bearing	PEEK	1
4	Interface Flange	2507	1
5	Round Pin	316L	4
6	Round Pin	316L	2
7	O-Ring	NBR	1
8	O-Ring	NBR	2
9	Piston Cylinder	2507	1
10	Piston Bushing	PEEK	5
11	Main Shaft	2507	1
12	Bottom Cover	2205	1
13	Piston	2507	5
14	Slipper	2507	5
15	Slipper - Peek	PEEK	5
16	Return Plate	2507	1
17	Ball Joint	2507	1
18	Ball Joint Block	PEEK	1
19	Swash Plate	2507	2
20	Internal Hexagon Screw M8-20	2507	4
21	Valve Plate	2507	1
22	Valve Plate Guide Sleeve	2507	5
23	Guide Seal Ring	PTFE	1
24	O-Ring	NBR	5
25	Main Shaft Bearing	PEEK	1
26	O-Ring	NBR	2
27	Internal Hexagon Screw M5-10	316L	5
28	M5 Combined Gasket	AISI 304	2
29	Internal Hexagon Screw M5-08	316L	2
30	Mechanical Seal 560A-18	316+NBR	1
31	Spring	2507	1
32	Flat Key 5-5-20	316L	1
33	Distribution Plate	304+PEEK	1
34	Round Pin	PEEK	3
35	Mechanical Seal Seat	PTFE	1
36	Single Valve End Cap	2205	1
37	Single Valve Core	PEEK	1
38	Spring	2507	1

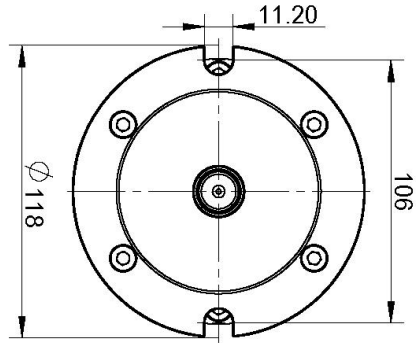
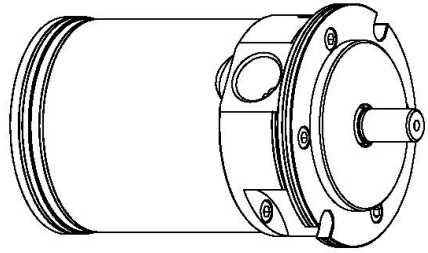
Specification - HPS 1.5~3.5

Pumps Model	1.5	1.8	2.2	2.5	3.0	3.5
Code Number	TT010200204	TT010200205	TT010200206	TT010200207	TT010200208	TT010200209
Displacement (cc/rev)	9.34	10.21	12.75	15.4	17.85	21.56
Housing Material	2507	2507	2507	2507	2507	2507
Min. Outlet Pressure (barg)	20	20	20	20	20	20
Max. Outlet Pressure (barg)	85	85	85	85	85	85
Inlet Pressure Continuous (barg)	0.5-5	0.5-5	0.5-5	0.5-5	0.5-5	0.5-5
Min. Speed,Continuous (rpm)	700	700	700	700	700	700
Max. Speed * (rpm)	3500	3500	3500	3000	3500	3000
Flow Rate (m ³ /H) (85barg,700 rpm)	0.3	0.34	0.45	0.57	0.64	0.76
Flow Rate(m ³ /H) (85barg,1000 rpm)	0.54	0.58	0.75	0.90	1.03	1.24
Flow Rate(m ³ /H) (85barg,1200 rpm)	0.58	0.64	0.84	1.03	1.18	1.39
Flow Rate (m ³ /H) (85barg,1500 rpm)	0.80	0.87	1.10	1.34	1.55	1.88
Flow Rate (m ³ /H) (85barg,1800 rpm)	0.92	1.0	1.27	1.58	1.80	2.11
Flow Rate (m ³ /H) (85barg,2500 rpm)	1.31	1.42	1.80	2.22	2.55	2.98
Flow Rate (m ³ /H) (85barg,3000 rpm)	1.60	1.73	2.18	2.68	3.07	3.58
Flow Rate (m ³ /H) (85barg,3500 rpm)	1.84	1.99	2.52		3.56	
Calculation Factor (at maximum speed)	519	524	532	535	532	530
Motor selection (KW) (Maximum pressure, maximum speed)	5.5	5.5	7.5	7.5	11	11
Media temperature (°C)	2~50	2~50	2~50	2~50	2~50	2~50
Sound Pressure Level (dB) **	78	78	78	78	78	78
Weight (kg)	8.5	8.5	8.5	8.5	8.5	8.5
Integrated Flush Valve	YES	YES	YES	YES	YES	YES

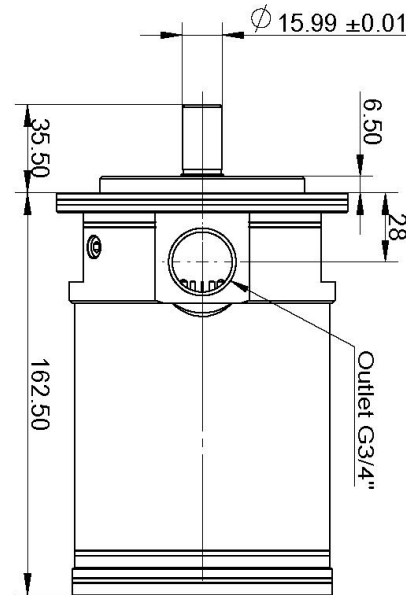
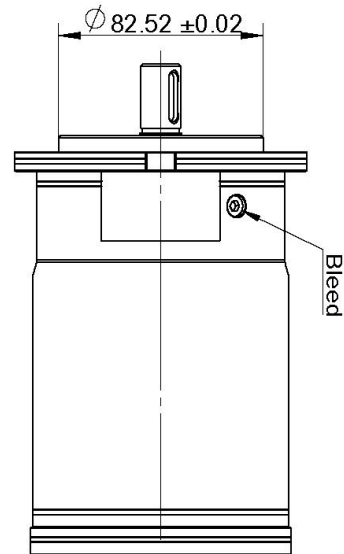
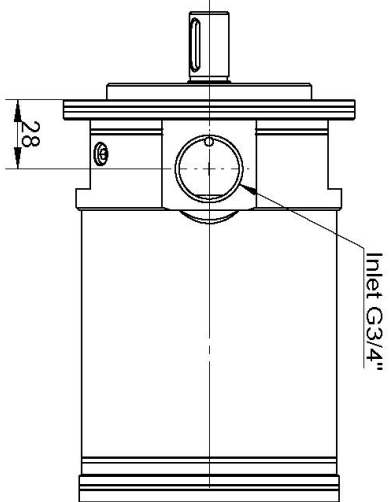
* At maximum speed, the inlet pressure must be at least 2 barg;

** Sound Pressure Level: Calculated according to EN ISO 3744: 2010 / dB(A) [LPA, 1m], when driven by a motor and operating at maximum working pressure and speed.

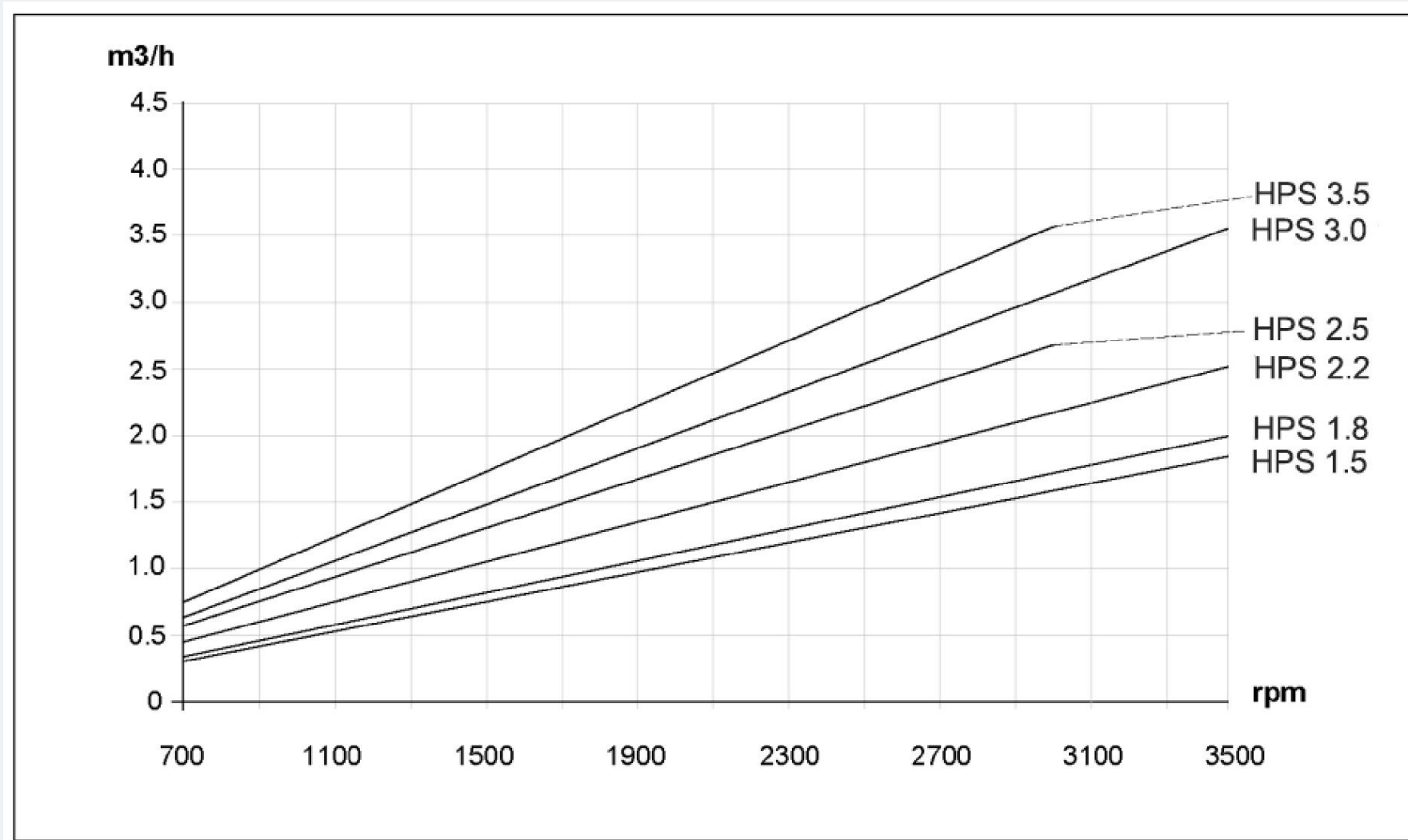
Installation Dimensions (HPS 1.5~3.5)



Parallel Key	5*5*20 (DIN6885)
Bleed	M5*8
Inlet Port	G 3/4" (T Port)
Outlet Port	G 3/4" (P Port)

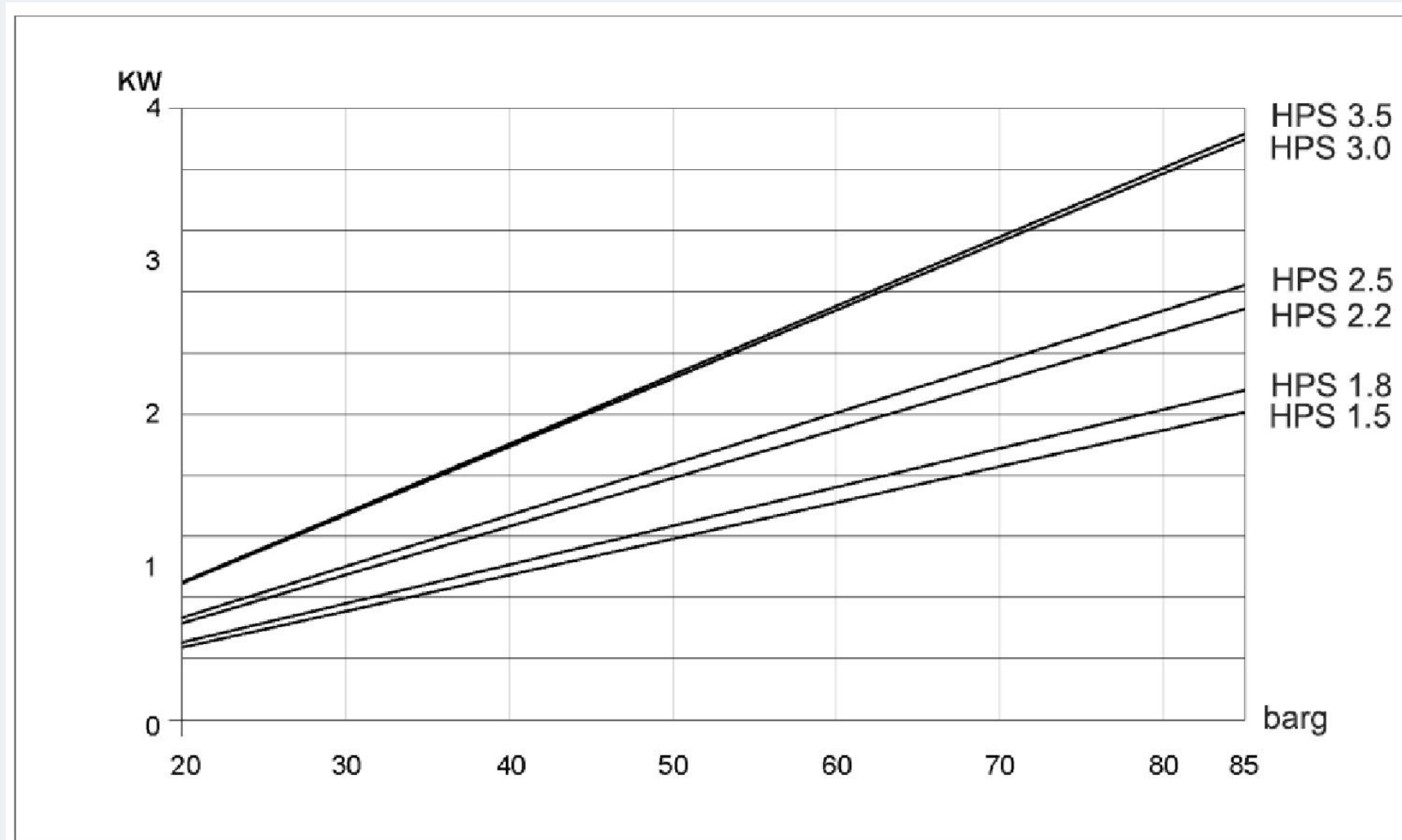


HPS 1.5~3.5 Typical Flow Curve at Maximum Pressure

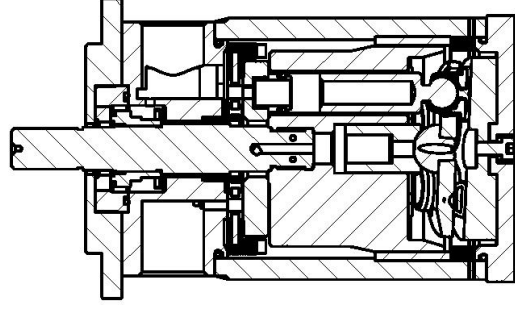
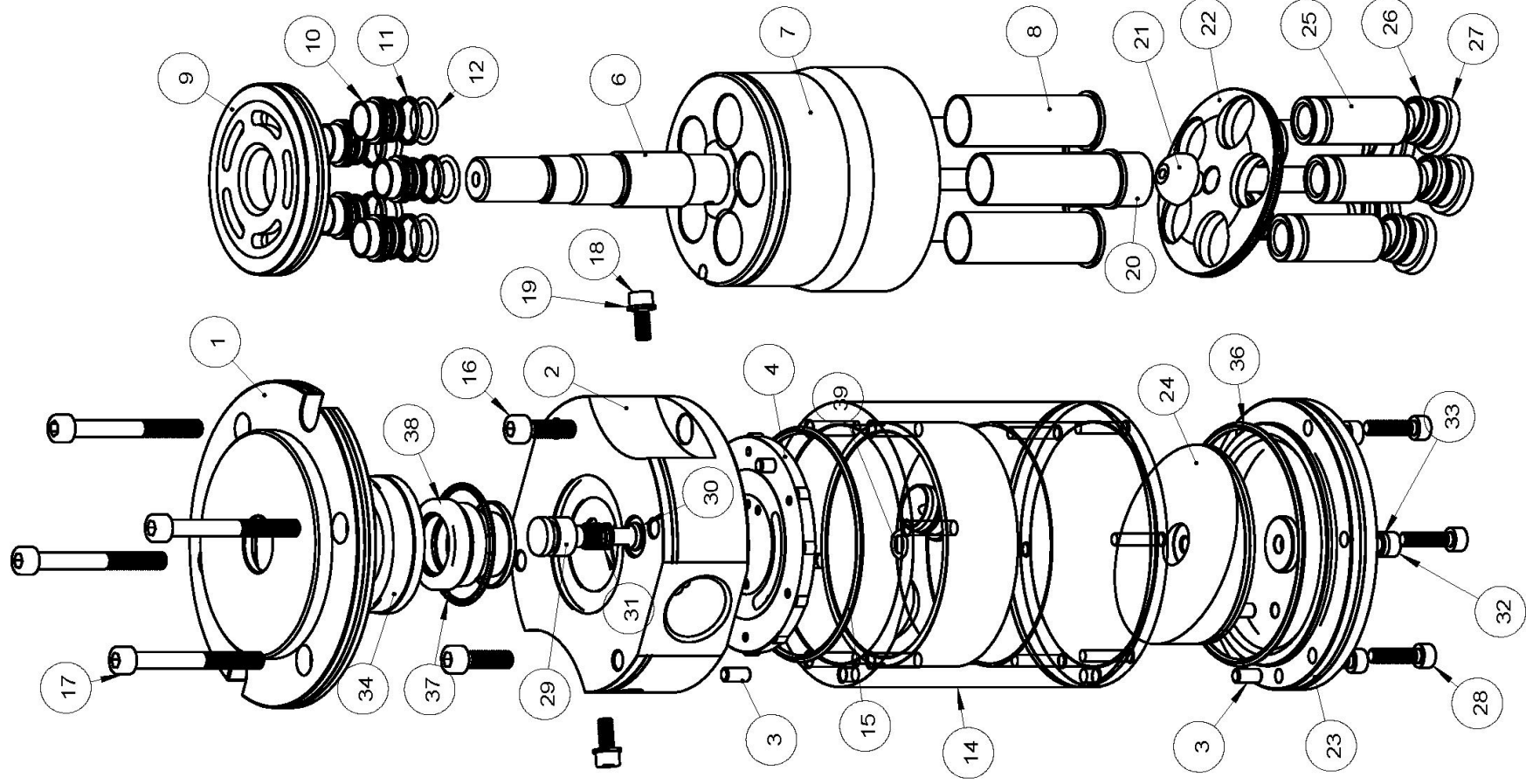


HPS 1.5~3.5 Motor Power Curve

Different Pressures at Maximum Speed



Drawing - HPS 1.5~3.5



No.	Parts	1.5-2.5	3.0-3.5	Material
1	Mounting Flange-63	1	1	316L
2	Connection Flange	1	1	2507
3	Round Pin 5-10	5	5	PEEK
4	Distribution Plate	1	1	PEEK
5	Distribution Plate with Iron Core	1	1	2205
6	Main Shaft	1	1	2507
7	Piston Cylinder	1	1	2507
8	Piston Bushing	5	7	PEEK
9	Valve Plate	1	1	2507
10	Valve Plate Guide Sleeve	5	7	2507
11	Guide Seal Ring	5	7	PTFE
12	Guide O-Ring	5	7	NBR
13	Small Bearing	1	1	PEEK
14	Housing	1	1	2205
15	Large Bearing	1	1	PEEK
16	Internal Hexagon Screw M6 x 20	2	2	316
17	Internal Hexagon Screw M6 x 55	4	4	316
18	Internal Hexagon Screw M5 x 12	2	2	316
19	PTFE Gasket	2	2	PTFE
20	Ball Joint Block	1	1	PEEK
21	Ball Joint	1	1	2507
22	Return Plate	1	1	2507
23	Bottom Cover	1	1	316L
24	12.5cc Swash Plate	1	1	2507
25	Piston	5	7	2507
26	Slipper 304	5	7	2507
27	Slipper PEEK	5	7	PEEK
28	Internal Hexagon Screw M5 x 20	6	6	316
29	Single Valve End Cap	1	1	2205
30	Single Valve Core	1	1	PEEK
31	Spring	1	1	2507
32	Internal Hexagon Screw M5-10	1	1	316L
33	M5 Combined Gasket	1	1	AlSi 304
34	Mechanical Seal Seat	1	1	PTFE
35	O-Ring 80-2.5	1	1	NBR
36	O-Ring 83-2.5	1	1	NBR
37	O-Ring 40-2.0	1	1	NBR
38	Mechanical Seal	1	1	NBR
39	Spring	1	1	2507

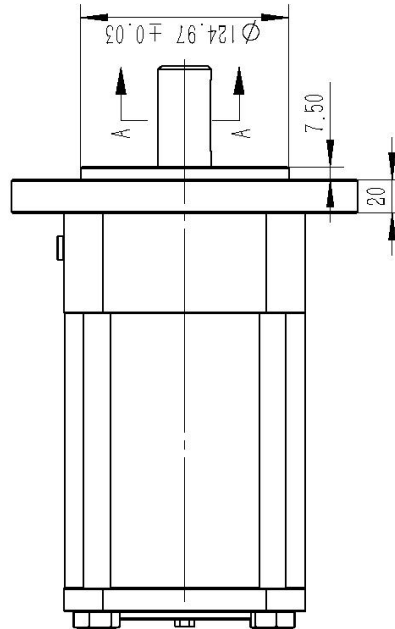
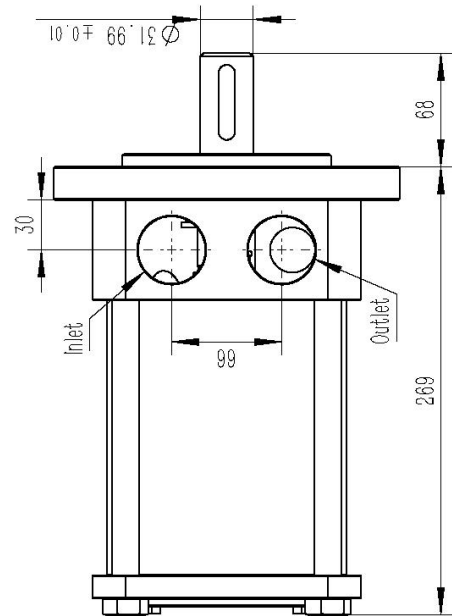
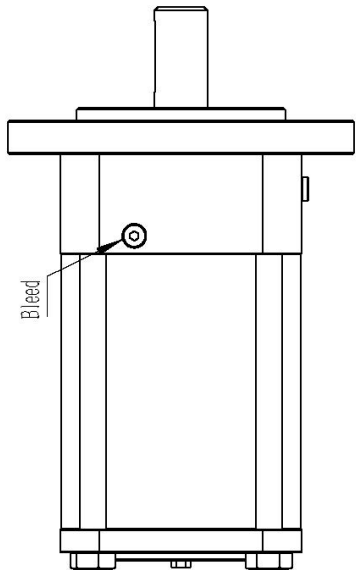
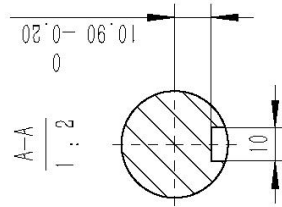
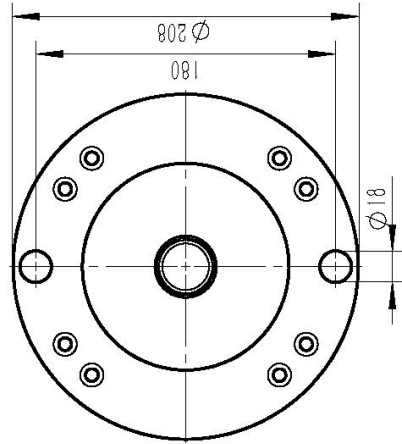
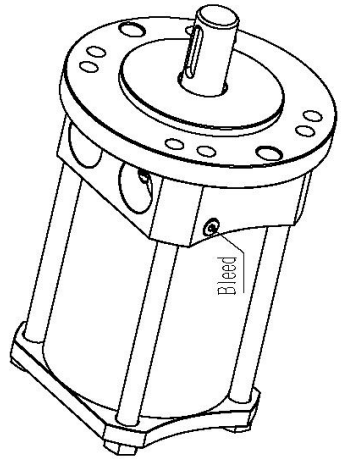
Specification - HPS 5.1~10.2

Pumps Model	5.1	6.5	7.2	8.2	10.2
Code Number	TT010200210	TT010200211	TT010200212	TT010200213	TT010200214
Displacement (cc/rev)	51.2	65.8	71.7	80.65	101.5
Housing Material	2507	2507	2507	2507	2507
Min. Outlet Pressure (barg)	20	20	20	20	20
Max. Outlet Pressure (barg)	85	85	85	85	85
Inlet Pressure Continuous (barg)	0.5-5	0.5-5	0.5-5	0.5-5	0.5-5
Min. Speed,Continuous (rpm)	700	700	700	700	700
Max. Speed * (rpm)	1800	1800	1800	1800	1800
Flow Rate (m ³ /H) (85barg,700 rpm)	1.70	2.30	2.58	3.00	3.86
Flow Rate (m ³ /H) (85barg,1000 rpm)	2.8	2.58	4.00	4.64	5.85
Flow Rate (m ³ /H) (85barg,1200 rpm)	3.21	4.18	4.70	5.45	6.88
Flow Rate (m ³ /H) (85barg,1500 rpm)	4.20	5.38	6.00	6.95	8.86
Flow Rate (m ³ /H) (85barg,1800 rpm)	5.04	6.45	7.22	8.30	10.50
Calculation Factor (at maximum speed)	506	514	518	523	528
Motor selection (KW) (Maximum pressure, maximum speed)	15	18.5	22	22	30
Media Temperature (°C)	2~50	2~50	2~50	2~50	2~50
Sound Pressure Level (dB) **	78	78	78	78	78
Weight (kg)	31.5	31.5	31.5	31.5	31.5
Integrated Flush Valve	YES	YES	YES	YES	YES

* At maximum speed, the inlet pressure must be at least 2 barg;

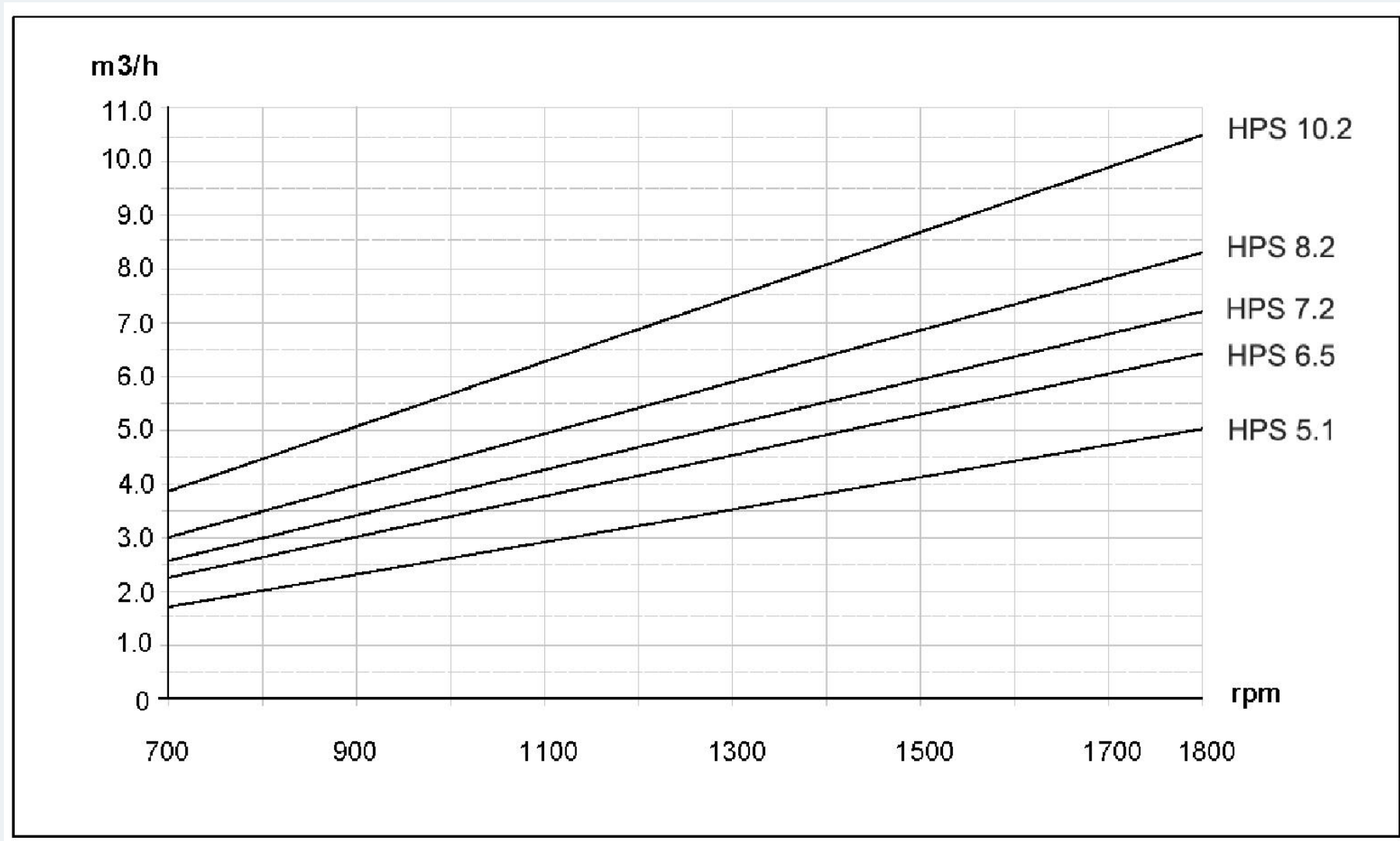
** Sound Pressure Level: Calculated according to EN ISO 3744: 2010 / dB(A) [LPA, 1m], when driven by a motor and operating at maximum working pressure and speed.

Installation Dimensions (HPS 5.1~10.2)

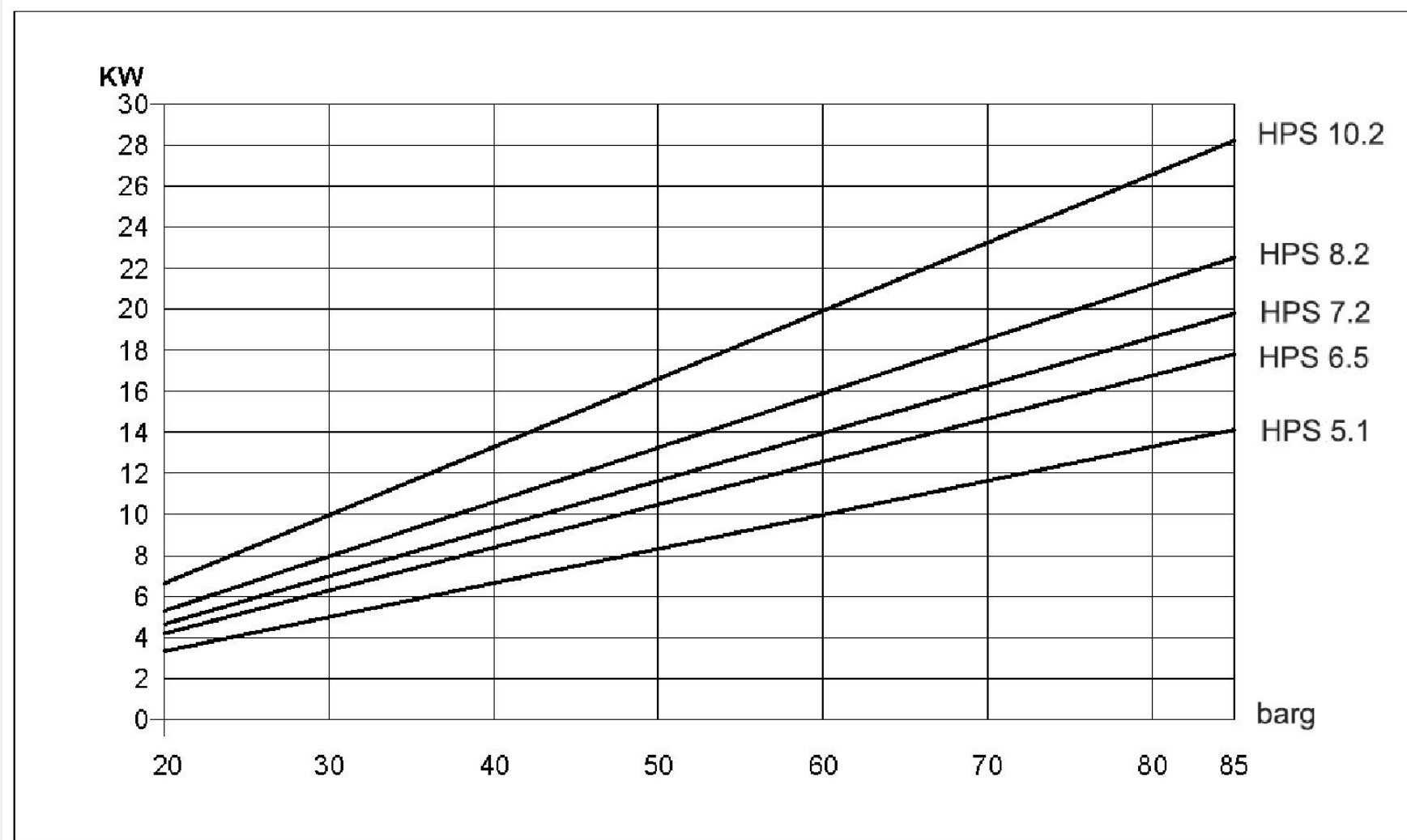


Parallel Key	10*8*45 (DIN6885)
Bleed	G 1/8"
Inlet Port	M42*1.5; Depth 15mm
Outlet Port	M42*1.5; Depth 15mm

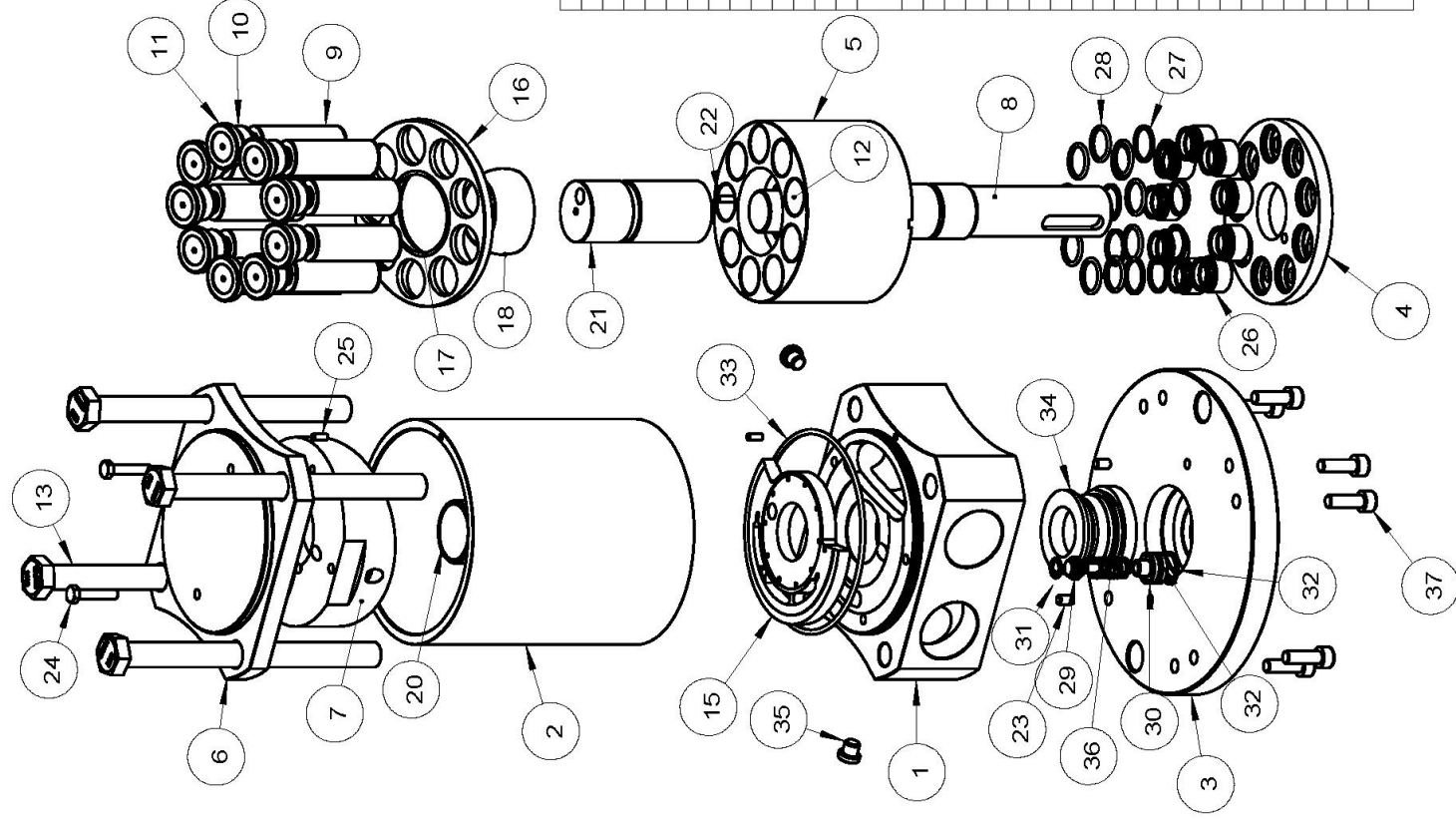
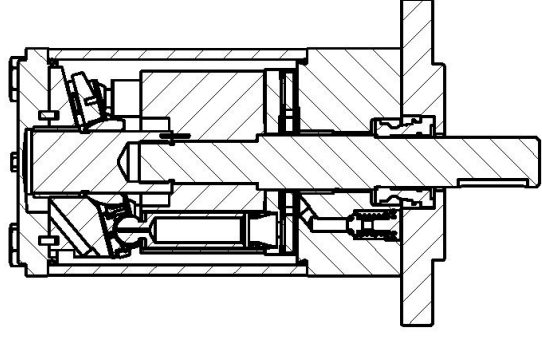
HPS 5.1~10.2 Typical Flow Curve at Maximum Pressure



HPS 5.1~10.2 Motor Power Curve Different Pressures at Maximum Speed



Drawing - HPS 5.1~10.2



No.	Parts	Qty	Material
1	Connection Flange 8.2	1	2507
2	Housing	1	2205
3	Mounting Flange	1	316L
4	Pressure Relief Valve Plate	1	2507
5	Piston Cylinder	1	2507
6	Bottom Cover	1	2205
7	Swash Plate-81	1	2507
8	Main Shaft	1	2507
9	Piston	9	2507
10	Slipper	9	2507
11	Slipper PEEK	9	PEEK
12	Piston Bushing	9	PEEK
13	Hexagon Socket Screw	4	316L
14	Distribution Plate with Iron Core	1	2205
15	Distribution Plate	1	PEEK
16	Return Plate	1	2507
17	Return Plate Sleeve	1	PEEK
18	Ball Joint	1	2507
19	Main Shaft Bearing-1	1	PEEK
20	Main Shaft Bearing-2	1	PEEK
21	Main Shaft Extension Shaft	3	2507
22	Round Pin 4-12	3	2205
23	Round Pin 6-10	4	316L
24	Hex Socket Screw M6X30	2	316
25	Round Pin 4-10	2	316L
26	Valve Plate Guide Sleeve	9	2507
27	Guide Seal Ring	9	PTFE
28	O-Ring 18.5-2.4-90	9	NBR
29	Flushing Valve Core	1	2507
30	Valve Cover	1	2205
31	O-Ring 2.0	2	NBR
32	O-Ring 6.5-2.0	2	NBR
33	O-Ring 125-3-70	1	NBR
34	Mechanical Seal	1	NBR+316
35	G1/8 Hex Plug	2	316L
36	Flushing Valve Spring	1	2507
37	Hex Socket Screw DIN912-M8-25	2	316L

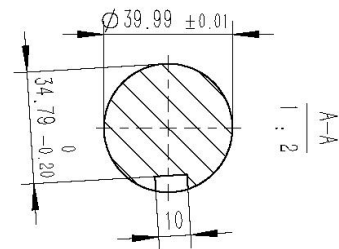
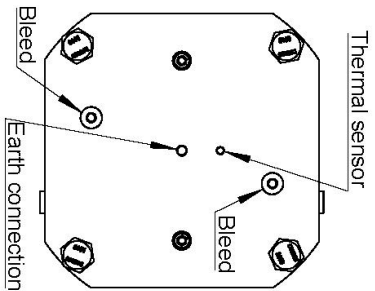
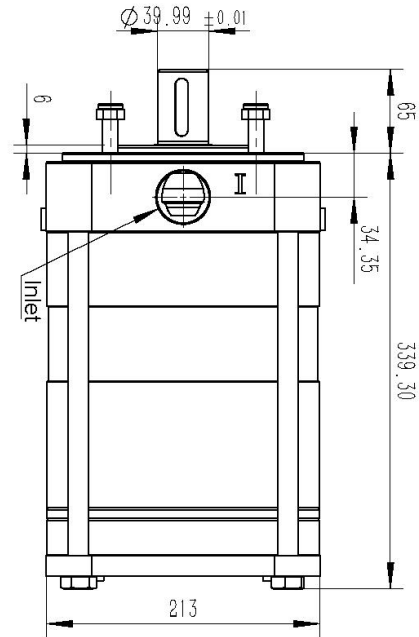
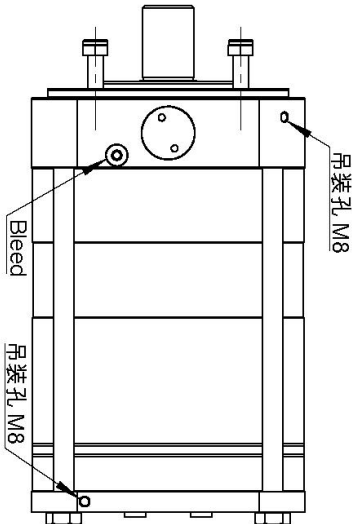
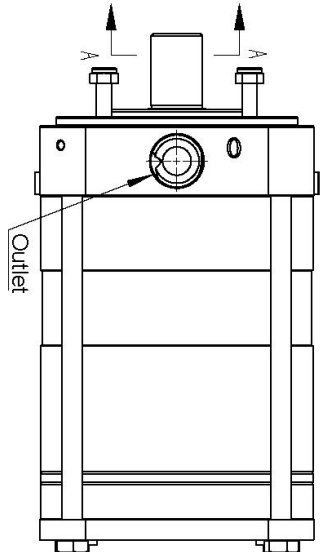
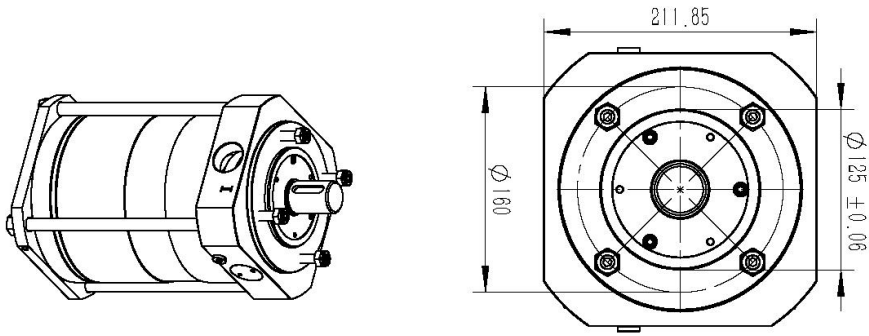
Specification - HPS 11.0~13.0

Pumps Model	11.0	13.0
Code Number	TT010200215	TT010200216
Displacement (cc/rev)	138.4	169.1
Housing Material	2507	2507
Min. Outlet Pressure (barg)	10	10
Max. Outlet Pressure (barg)	70 (1500rpm) 85 (1200rpm)	70 (1500rpm) 85 (1200rpm)
Inlet Pressure Continuous (barg)	2-5	2-5
Min. Speed,Continuous (rpm)	700	700
Max. Speed * (rpm)	1500	1500
Flow Rate (m ³ /H) (85barg,700 rpm)	4.80	6.00
Flow Rate (m ³ /H) (85barg,1000 rpm)	7.50	9.24
Flow Rate (m ³ /H) (85barg,1200 rpm)	8.95	11
Flow Rate (m ³ /H) (70barg,1500 rpm)	11.26	13.85
Calculation Factor(at maximum speed)	502	505
Motor Selection (KW) (Maximum pressure, maximum speed)	30	37
Media Temperature (°C)	2~50	2~50
Sound Pressure Level (dB) **	85	85
Weight (kg)	72	72
Integrated Flush Valve	YES	YES

* At maximum speed, the inlet pressure must be at least 2 barg;

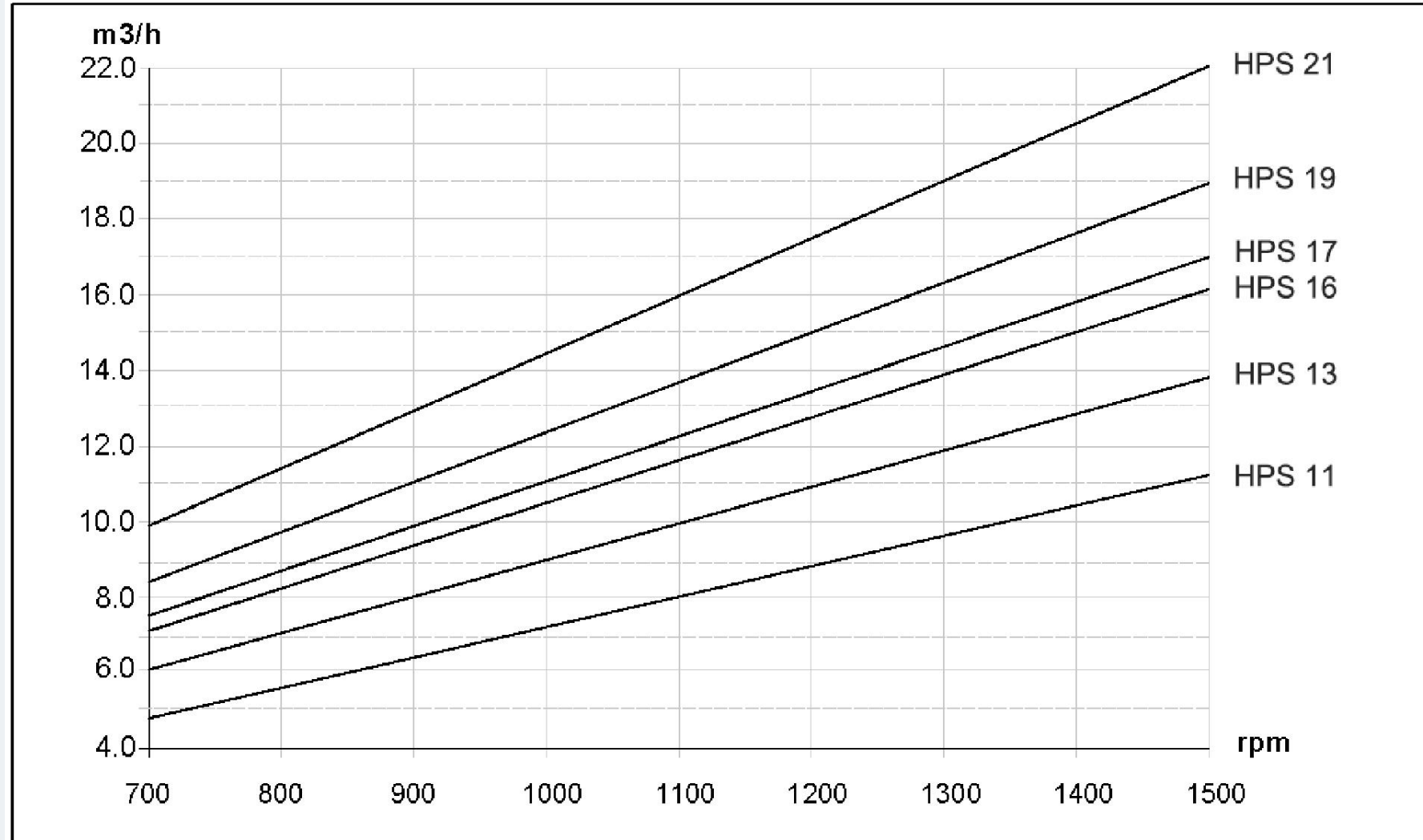
** Sound Pressure Level: Calculated according to EN ISO 3744: 2010 / dB(A) [LPA, 1m], when driven by a motor and operating at maximum working pressure and speed.

Installation Dimensions (HPS 11~13)



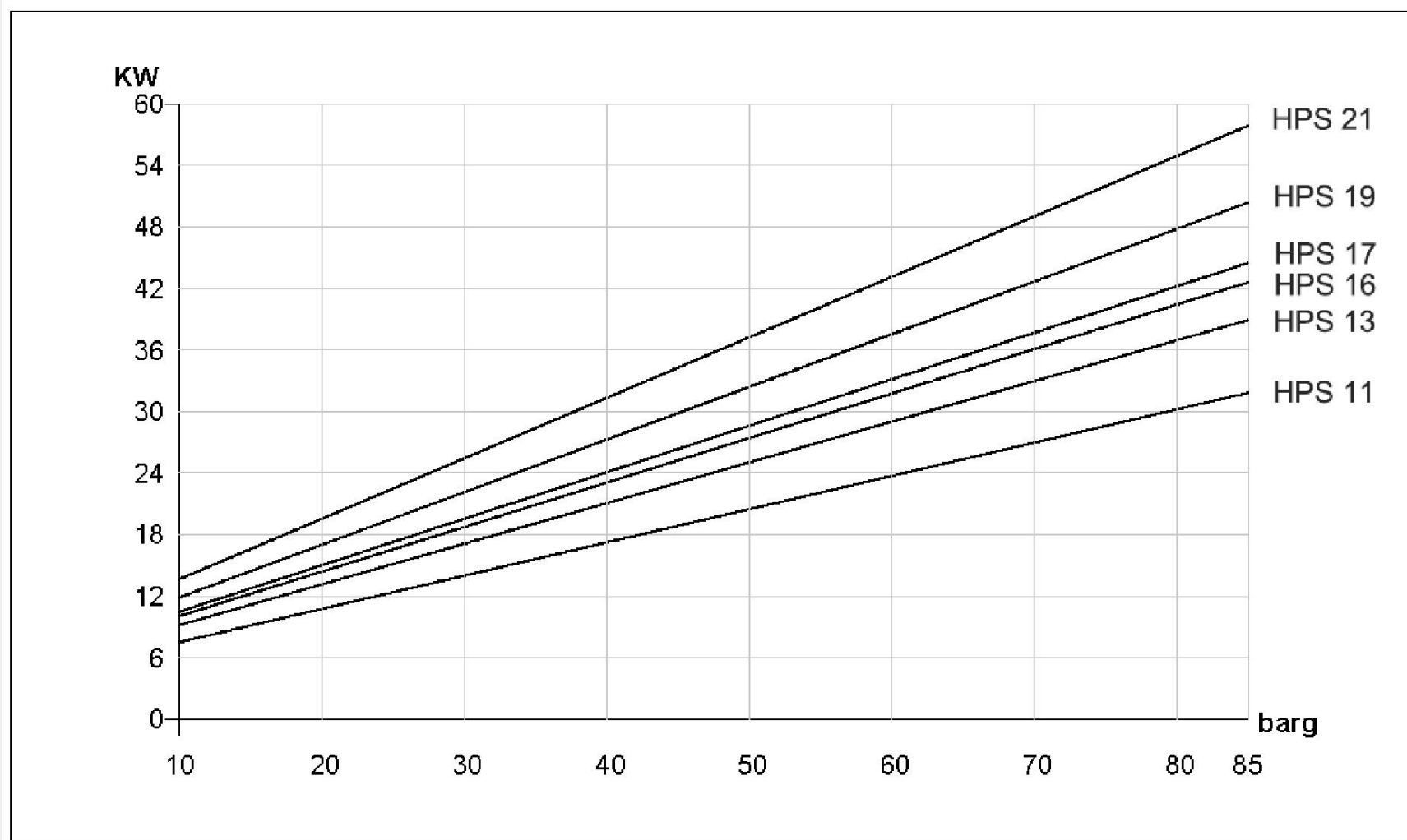
Parallel Key	10*8*45 (DIN6885)
Bleed	G 1/4" * 4
Inlet Port	M42*1.5; Depth 19mm
Outlet Port	M42*1.5; Depth 19mm
Earth Conn.	M8; Depth 8mm
Thermal Sensor	M6; Depth 8mm

HPS 11~13 Typical Flow Curve at Maximum Pressure

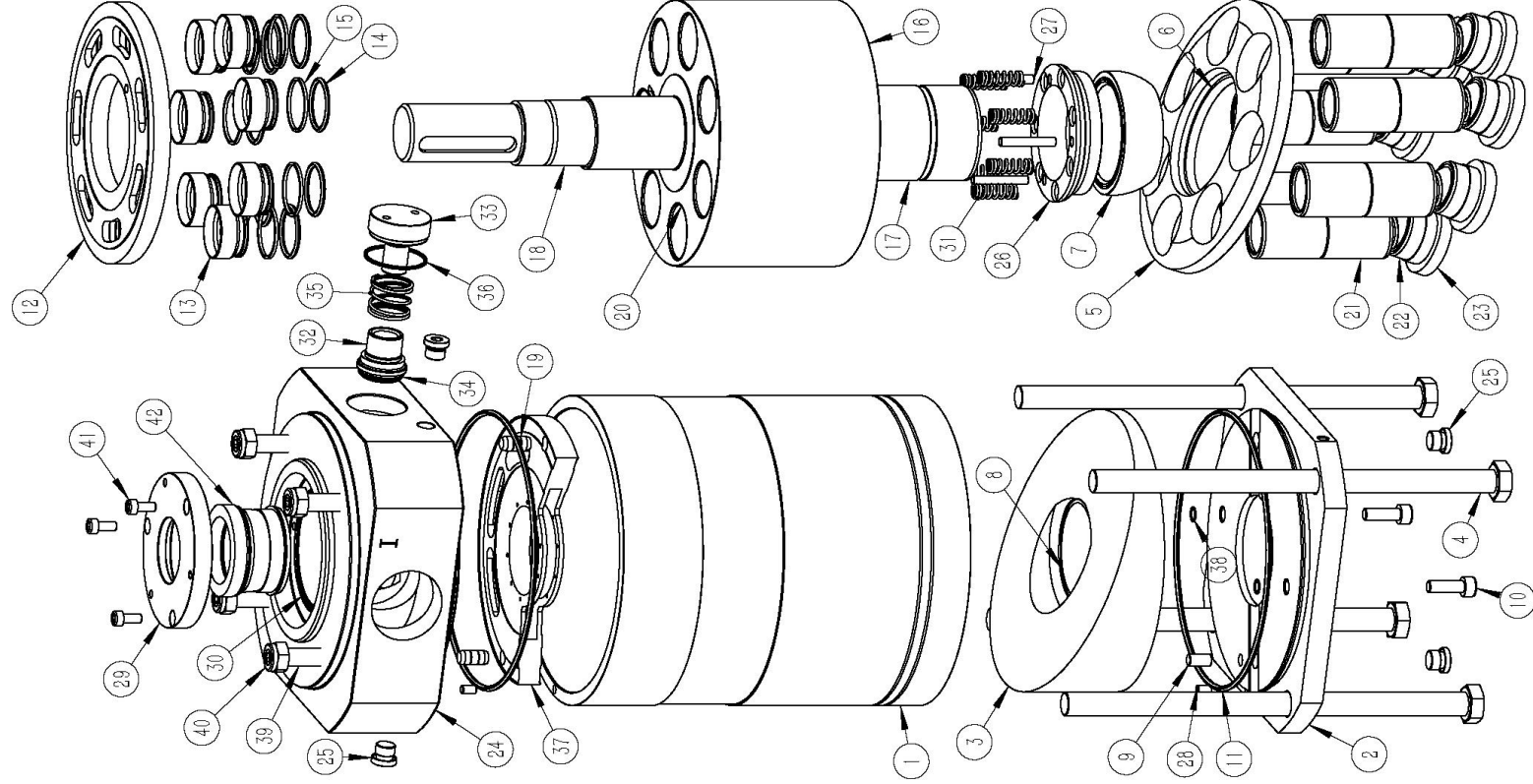
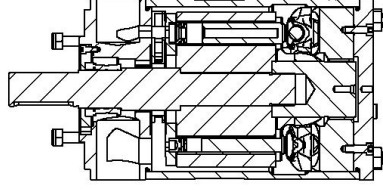


HPS 11~13 Motor Power Curve

Different Pressures at Maximum Speed



Drawing - HPS 11~13



No.	Parts	Material	Qty
1	Body	2205	1
2	Bottom Cover	2205	1
3	Swash Plate-81	2507	1
4	Hexagon Screw	316L	4
5	Return Plate	2507	1
6	Return Plate Sleeve	PEEK	1
7	Ball Joint	2507	1
8	Main Shaft Bearing-1	PEEK	1
9	Round Pin 8-16	2507	2
10	Internal Hexagon Screw M8-25	316	2
11	O-Ring 185-3.65	NBR	2
12	Pressure Relief Valve Plate	2507	1
13	Valve Plate Guide Sleeve	2507	7
14	O-Rng 31-3.0-90	NBR	2
15	Guide Seal Ring	PTFE	7
16	Piston Cylinder	2507	1
17	Main Shaft Extension Shaft	2507	1
18	Main Shaft-22	2507	1
19	Round Pin 10-20	2507	3
20	Piston Bushing	PEEK	7
21	Piston	2507	7
22	Slipper	2507	7
23	Slipper PEEK	PEEK	7
24	Connection Flange 22	2507	1
25	ED Hex Plug G1-4	2205	4
26	Ball Joint Gasket	2507	1
27	Round Pin 6-40	2507	3
28	Round Pin 6-10	2507	2
29	Shaft Seal Cover	2205	1
30	O-Ring 81-2.5	NBR	7
31	Return Plate Spring	2507	1
32	Flushing Valve Core	2507	1
33	Flushing Valve	2205	1
34	O-Ring 25-3.0	NBR	1
35	Flushing Valve Spring	2507	1
36	O-Ring 39.5-2.0	NBR	1
37	Distribution Plate	PEEK	1
38	O-Ring 8.0-1.0	NBR	2
39	Internal Hexagon Screw M12-60	316	4
40	Anti-Loose Nut M12	316	4
41	Internal Hexagon Screw M6-14	316	3
42	Mechanical Seal	NBR	1

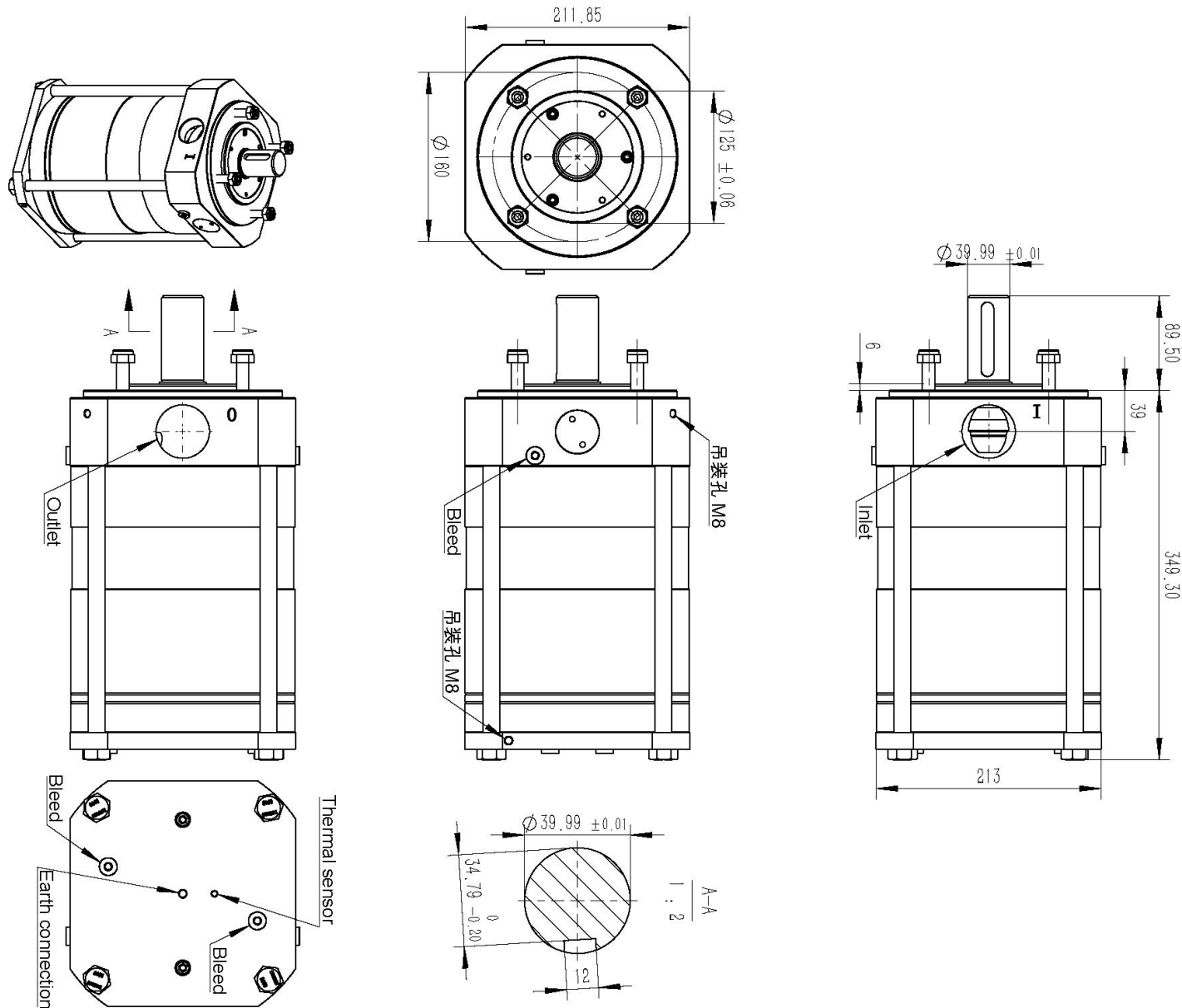
Specification - HPS 16~21

Pumps Model	16	17	19	21
Code Number	TT010200217	TT010200218	TT010200219	TT010200220
Displacement (cc/rev)	187.3	196.4	220.3	251.96
Housing Material	2507	2507	2507	2507
Min. Outlet Pressure (barg)	10	10	10	10
Max. Outlet Pressure (barg)	70 (1500rpm) 85 (1200rpm)	70 (1500rpm) 85 (1200rpm)	70 (1500rpm) 85 (1200rpm)	70 (1500rpm) 85 (1200rpm)
Inlet pressure Continuous (barg)	2-5	2-5	2-5	2-5
Min. Speed,Continuous(rpm)	700	700	700	700
Max. Speed * (rpm)	1500	1500	1500	1500
Flow Rate (m ³ /H) (85barg,700 rpm)	7.12	7.53	8.42	9.92
Flow Rate (m ³ /H) (85barg,1000 rpm)	10.6	11.18	12.58	14.58
Flow Rate (m ³ /H) (85barg,1200 rpm)	12.76	13.45	15.02	17.52
Flow Rate (m ³ /H) (70barg,1500 rpm)	16.0	16.80	18.85	21.82
Calculation Factor(at maximum speed)	533	536	531	535
Motor Selection (KW) (Maximum pressure, maximum speed)	37	37	45	55
Media Temperature (°C)	2~50	2~50	2~50	2~50
Sound Pressure Level (dB) **	85	85	85	85
Weight (kg)	75	75	75	75
Integrated Flush Valve	YES	YES	YES	YES

* At maximum speed, the inlet pressure must be at least 2 barg;

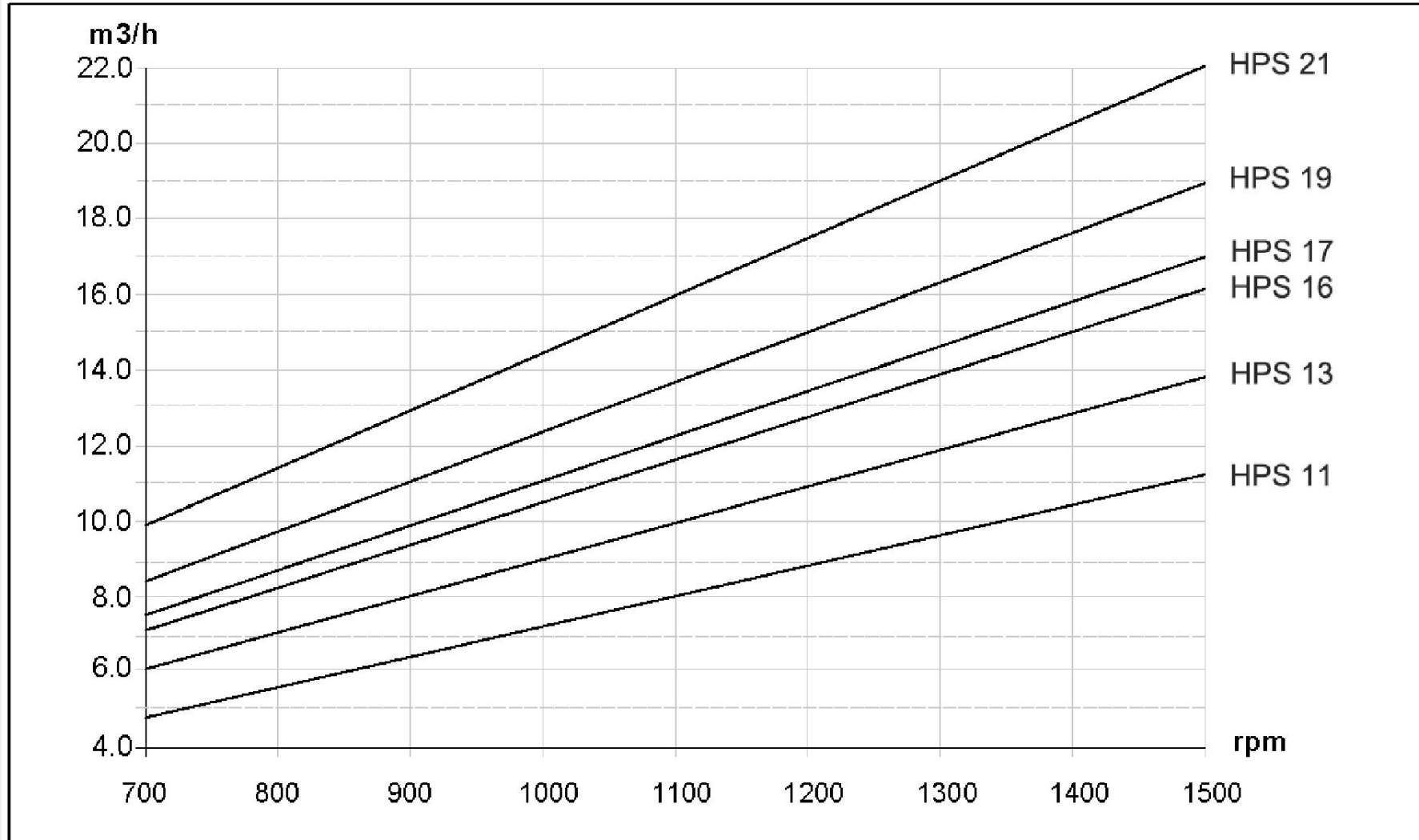
** Sound Pressure Level: Calculated according to EN ISO 3744: 2010 / dB(A) [LPA, 1m], when driven by a motor and operating at maximum working pressure and speed.

Installation Dimensions (HPS 16~21)



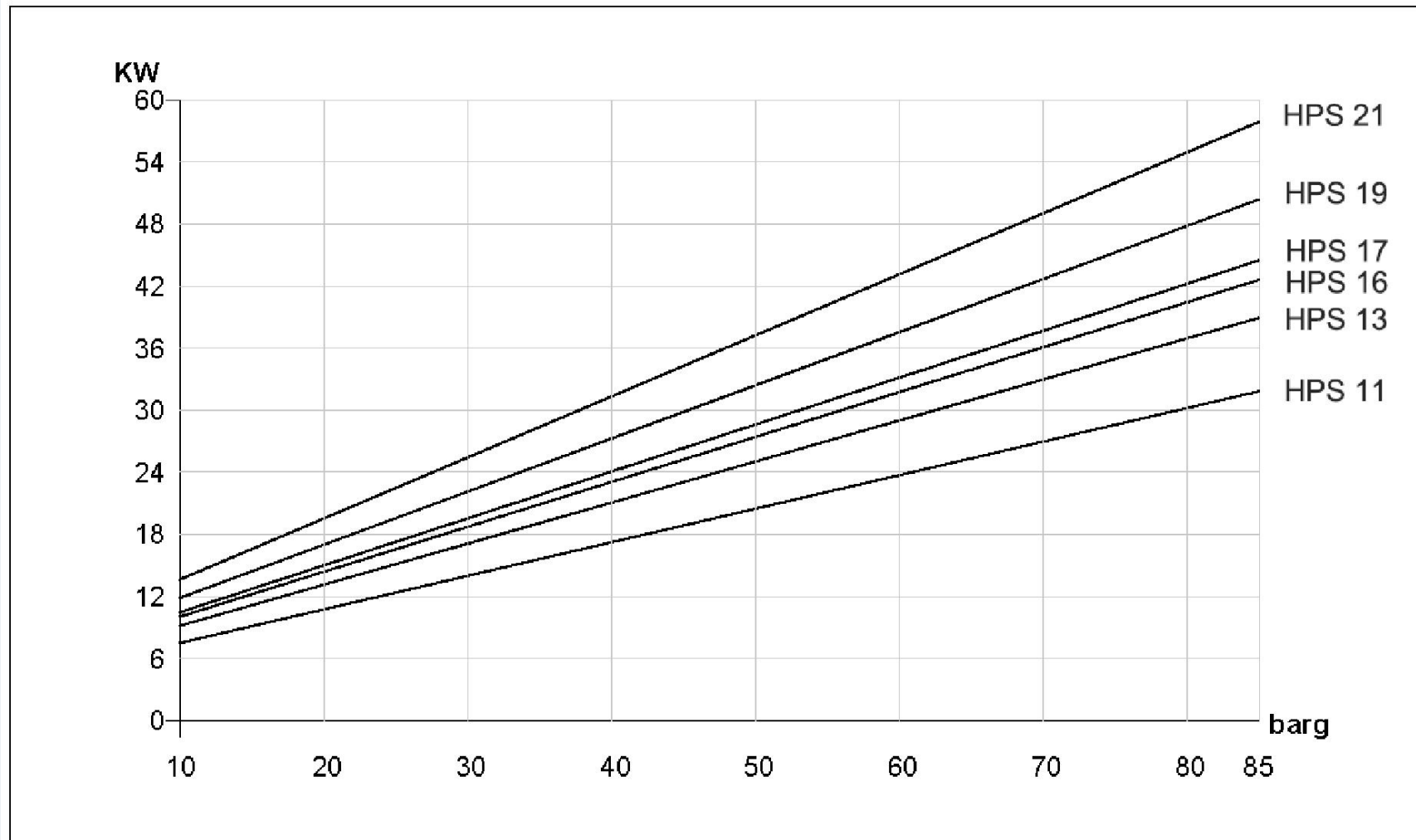
Parallel Key	10*8*45 (DIN6885)
Bleed	G 1/4" * 4
Inlet Port	M52*1.5; Depth 22mm
Outlet Port	M42*1.5; Depth 22mm
Earth Conn.	M8; Depth 8mm
Thermal Sensor	M6; Depth 8mm

HPS 16~21 Typical Flow Curve at Maximum Pressure

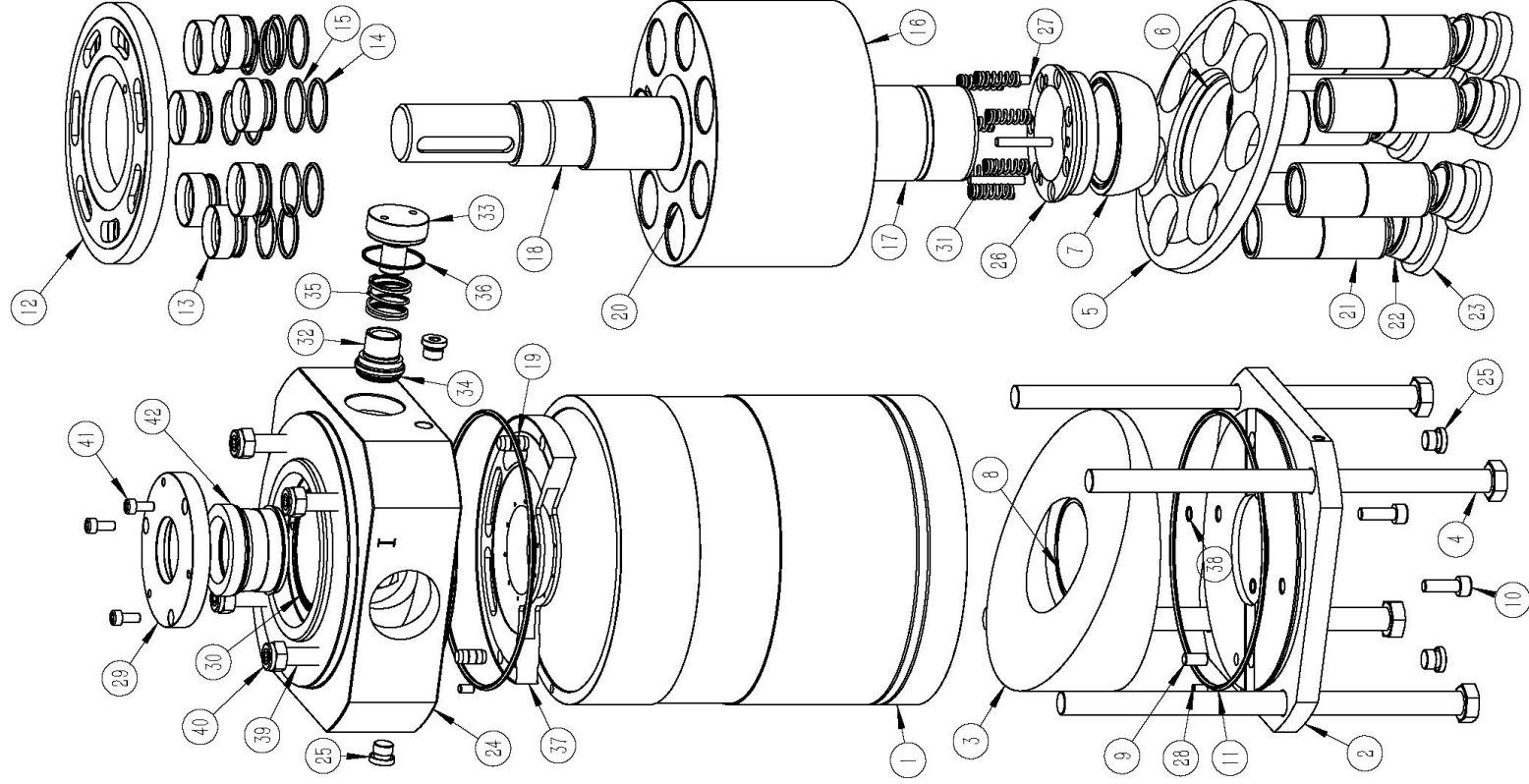
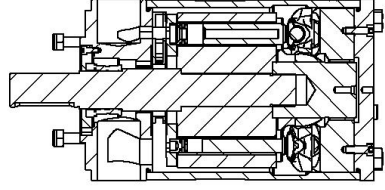


HPS 16~21 Motor Power Curve

Different Pressures at Maximum Speed



Drawing - HPS 16~21



No.	Parts	Material	Qty
1	Body	2205	1
2	Bottom Cover	2205	1
3	Swash Plate-81	2507	1
4	Hexagon Screw	316L	4
5	Return Plate	2507	1
6	Return Plate Sleeve	PEEK	1
7	Ball Joint	2507	1
8	Main Shaft Bearing-1	PEEK	1
9	Round Pin 8-16	2507	2
10	Internal Hexagon Screw M8-25	316	2
11	O-Ring 185-3.65	NBR	2
12	Pressure Relief Valve Plate	2507	1
13	Valve Plate Guide Sleeve	2507	7
14	O-Ring 31-3.0-90	NBR	2
15	Guide Seal Ring	PTFE	7
16	Piston Cylinder	2507	1
17	Main Shaft Extension Shaft	2507	1
18	Main Shaft-22	2507	1
19	Round Pin 10-20	2507	3
20	Piston Bushing	PEEK	7
21	Piston	2507	7
22	Slipper	2507	7
23	Slipper PEEK	PEEK	7
24	Connection Flange 22	2507	1
25	ED Hex Plug G1-4	2205	4
26	Ball Joint Gasket	2507	1
27	Round Pin 6-40	2507	3
28	Round Pin 6-10	2507	2
29	Shaft Seal Cover	2205	1
30	O-Ring 81-2.5	NBR	1
31	Return Plate Spring	2507	7
32	Flushing Valve Core	2507	1
33	Flushing Valve	2205	1
34	O-Ring 25-3.0	NBR	1
35	Flushing Valve Spring	2507	1
36	O-Ring 39.5-2.0	NBR	1
37	Distribution Plate	PEEK	1
38	O-Ring 8.0-1.0	NBR	2
39	Internal Hexagon Screw M12-60	316	4
40	Anti-Loose Nut M12	316	4
41	Internal Hexagon Screw IM6-14	316	3
42	Mechanical Seal	NBR	1

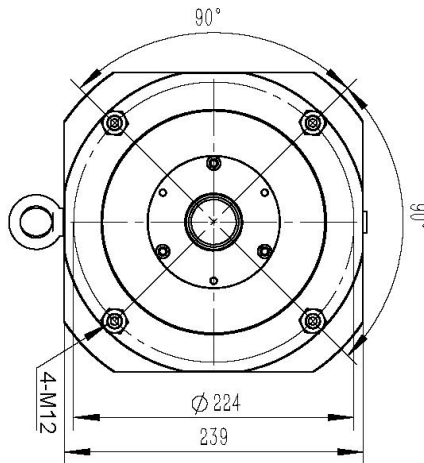
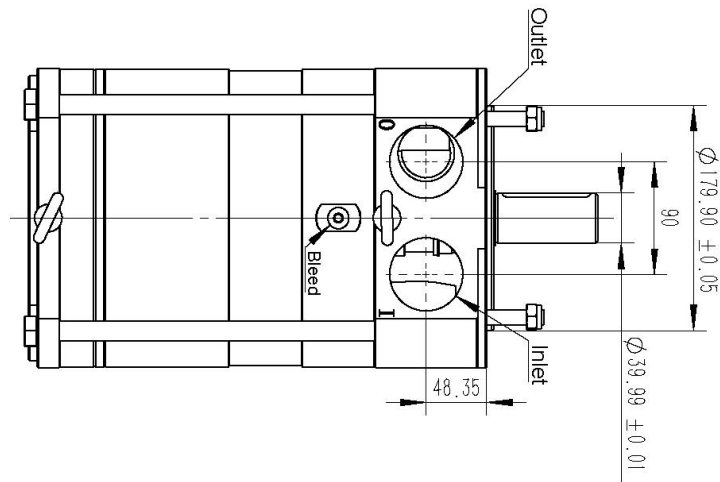
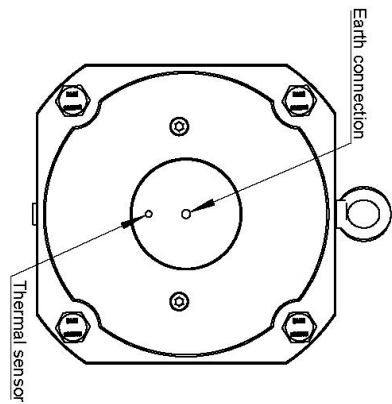
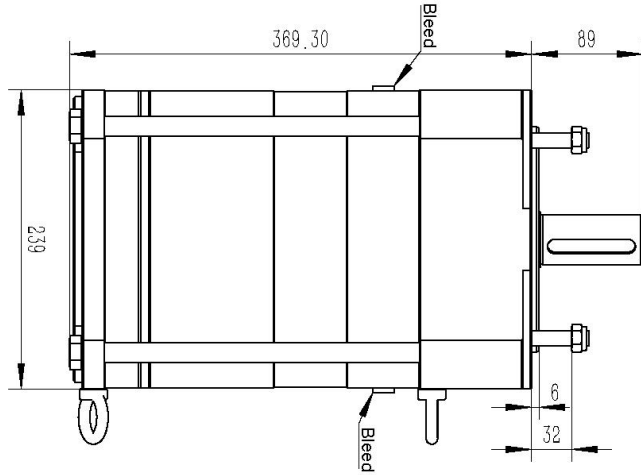
Specification - HPS 22~39

Pumps Model	22	24	26	31	39
Code Number	TT010200221	TT010200222	TT010200223	TT010200224	TT010200224
Displacement (cc/rev)	254.5	280.6	306.8	360	441.4
Housing Material	2205/2507	2205/2507	2205/2507	2205/2507	2205/2507
Min. Outlet Pressure (barg)	10	10	10	10	10
Max. Outlet Pressure (barg)	70 (1500rpm) 85 (1200rpm)	70 (1500rpm) 85 (1200rpm)	70 (1500rpm) 85 (1200rpm)	70 (1500rpm) 85 (1200rpm)	70 (1500rpm) 85 (1200rpm)
Inlet Pressure Continuous (barg)	2-5	2-5	2-5	2-5	2-5
Min. Speed,Continuous(rpm)	700	700	700	700	700
Max. Speed * (rpm)	1500	1500	1500	1500	1500
Flow Rate (m ³ /H) (85barg,700 rpm)	10.10	11.20	12.20	14.53	18.10
Flow Rate (m ³ /H) (85barg,1000 rpm)	14.76	16.35	17.85	21.08	26.00
Flow Rate (m ³ /H) (85barg,1200 rpm)	17.80	19.68	21.46	25.40	31.45
Flow Rate (m ³ /H) (70barg,1500 rpm)	22.18	24.5	26.76	31.65	39.10
Calculation Factor(at maximum speed)	531	537	534	540	541
Motor Selection (KW) (Maximum pressure, maximum speed)	75	75	75	90	110
Media Temperature (°C)	2~50	2~50	2~50	2~50	2~50
Sound Pressure Level (dB) **	85	85	85	85	85
Weight (kg)	98	98	98	98	98
Integrated Flush Valve	YES	YES	YES	YES	YES

* At maximum speed, the inlet pressure must be at least 2 barg;

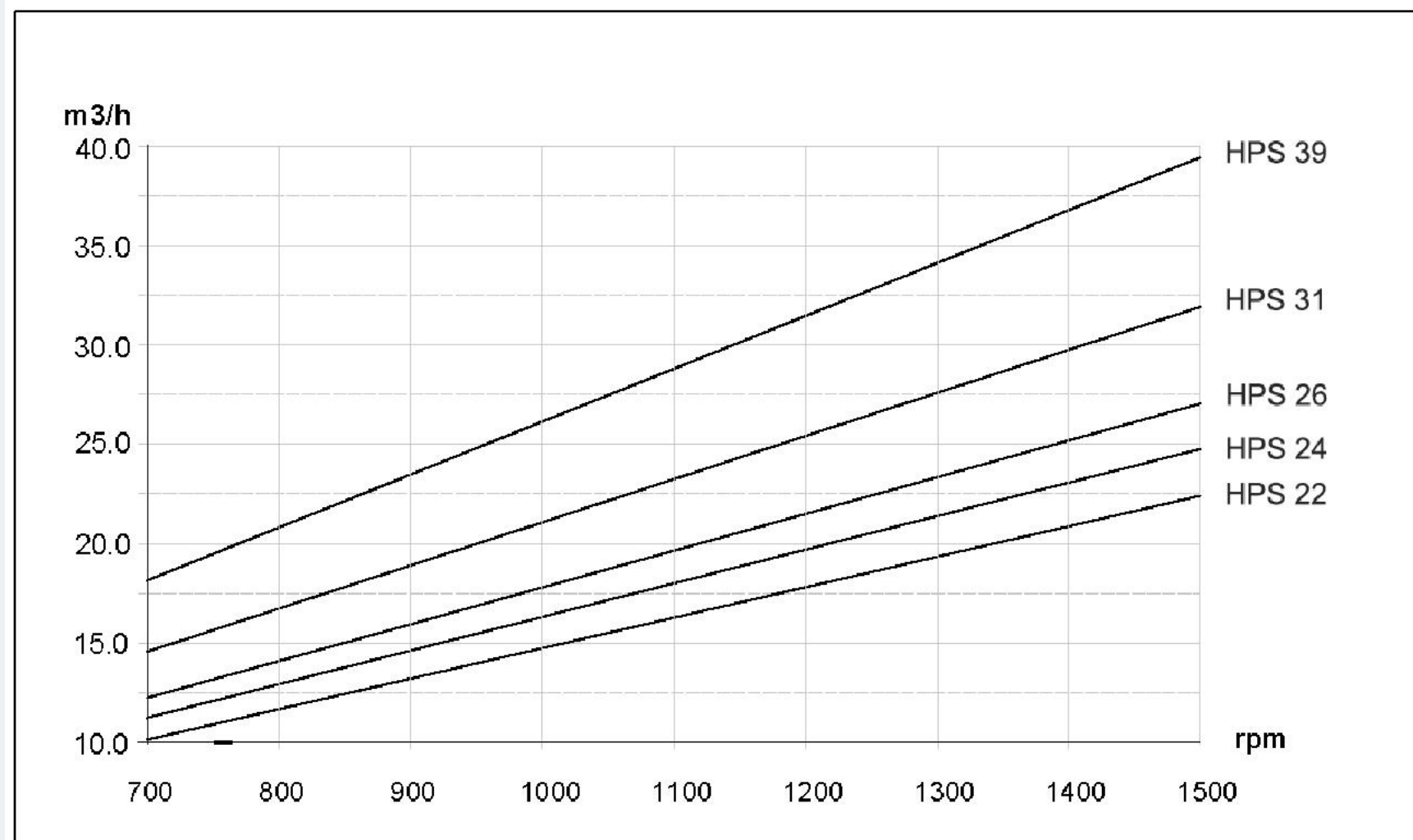
** Sound Pressure Level: Calculated according to EN ISO 3744: 2010 / dB(A) [LPA, 1m], when driven by a motor and operating at maximum working pressure and speed.

Installation Dimensions (HPS 22~39)



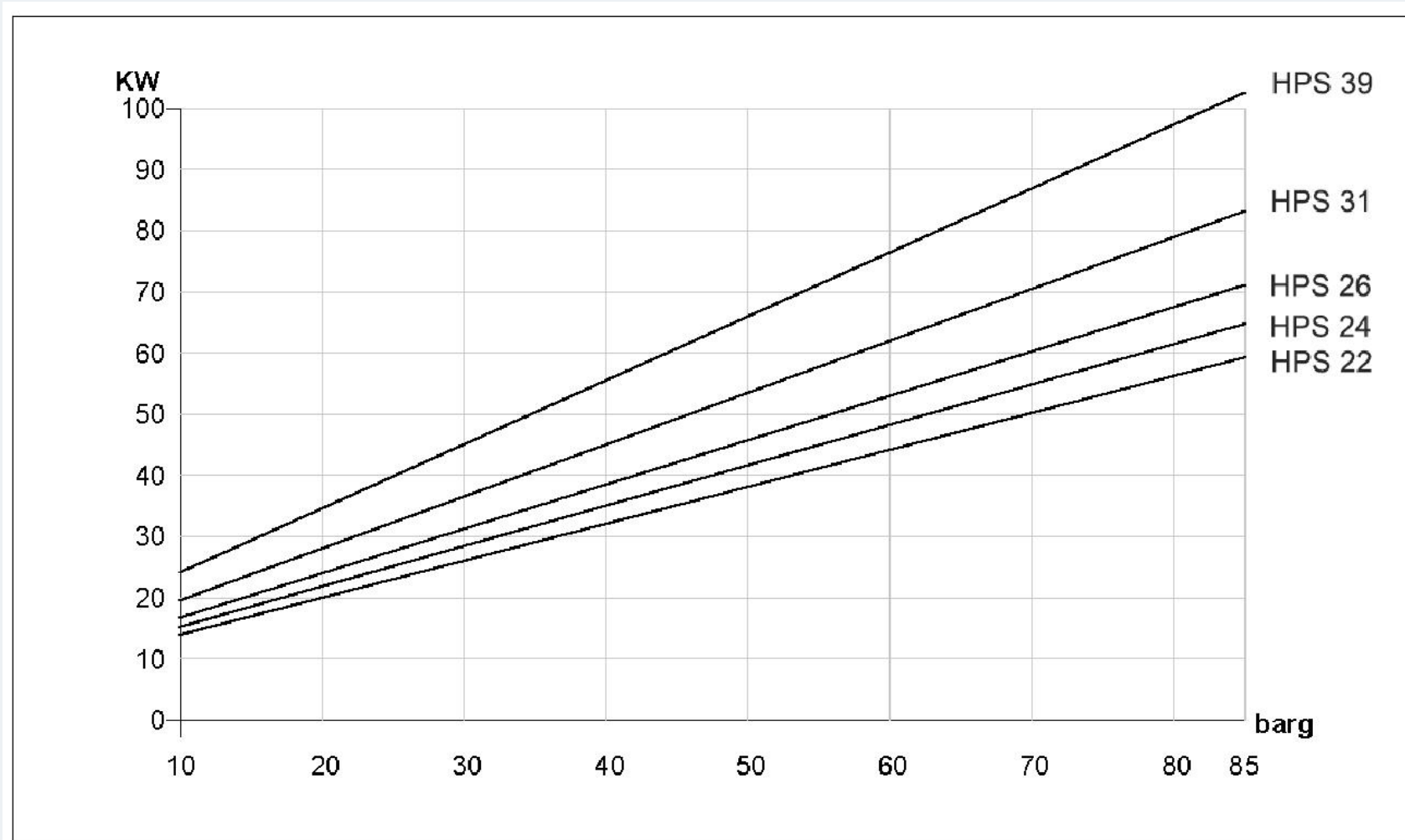
Parallel Key	12*8*70 (DIN6885)
Bleed	G 1/4" * 4
Inlet Port	M60*1.5; Depth 25mm
Outlet Port	M60*1.5; Depth 25mm
Earth Conn.	M8; Depth 8mm
Thermal Sensor	M6; Depth 8mm

HPS 22~39 Typical Flow Curve at Maximum Pressure

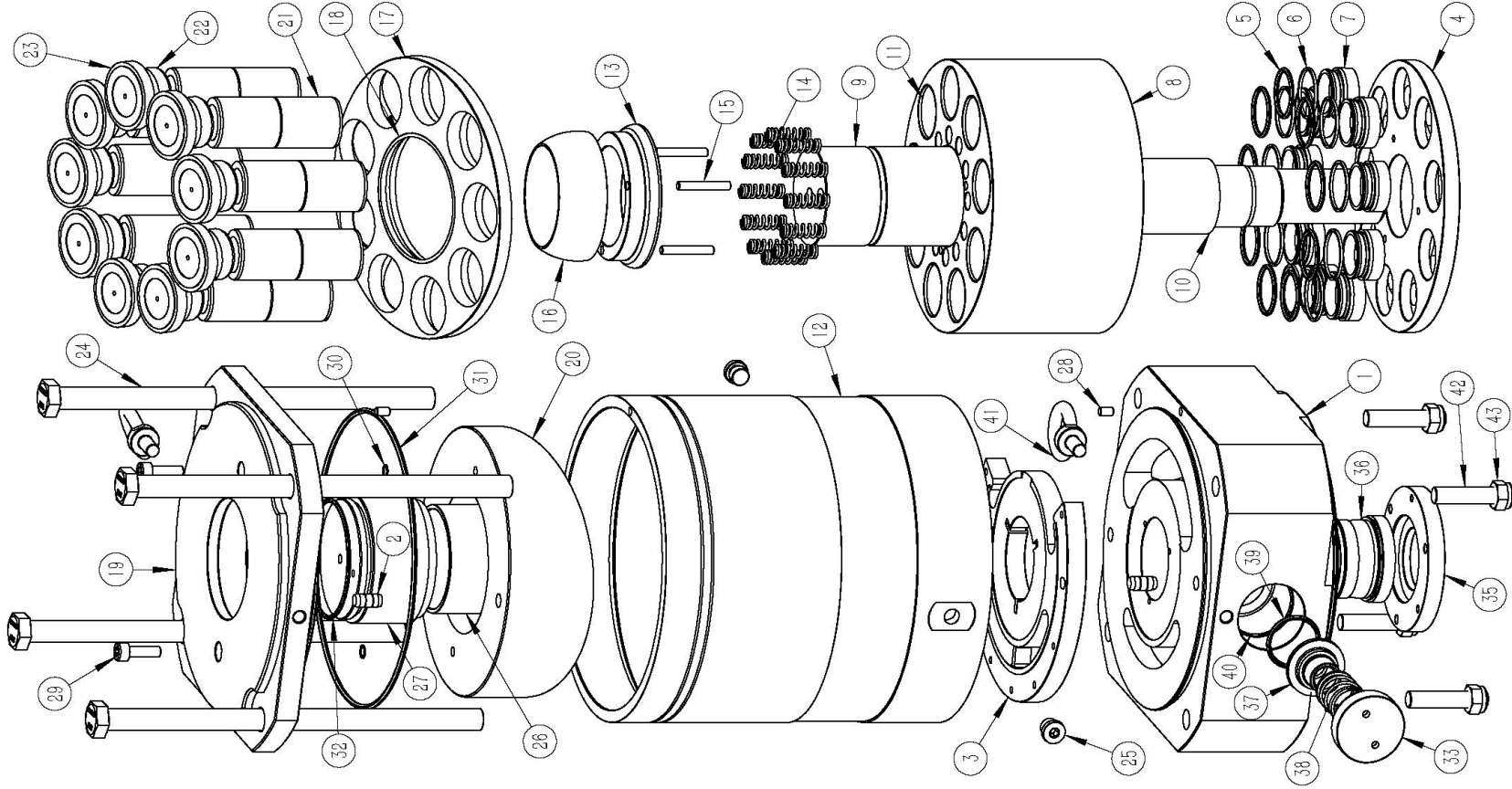
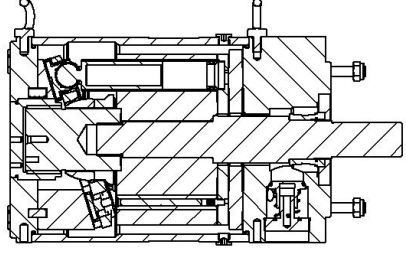


HPS 22~39 Motor Power Curve

Different Pressures at Maximum Speed



Drawing - HPS 22~39



No.	Parts	Material	Qty
1	Connection Flange-26	2507	1
2	Round Pin 10-20	2507	5
3	Distribution Plate	PEEK	1
4	Valve Plate	2507	1
5	O-Ring 31-3.0	NBR	9
6	Seal Ring	PTFE	9
7	Guide Sleeve	2507	9
8	Piston Cylinder	2507	1
9	Main Shaft Extension Shaft	2507	1
10	Main Shaft-26	2507	1
11	Piston Bushing	PEEK	9
12	Housing	2205	1
13	Ball Joint Gasket	2507	1
14	Return Plate Spring	2507	12
15	Round Pin	2507	3
16	Ball Joint	2507	1
17	Return Plate	2507	1
18	Return Plate Sleeve	PEEK	1
19	Bottom Cover	2205	1
20	Swash Plate	2507	1
21	Piston	2507	9
22	Slipper	PEEK	9
23	Slipper PEEK	PEEK	9
24	Hexagon Screw	316	4
25	G1/4 Hex Plug	316	2
26	Main Shaft Bearing-2	PEEK	1
27	Shaft Seal Seat	2507	1
28	Round Pin	2507	2
29	Internal Hexagon Screw M8-25	316	2
30	O-Ring 8.0-1.0	NBR	2
31	O-Ring 212-3.55	NBR	2
32	O-Ring 82.5-2.65	NBR	1
33	Flushing Valve Cover	2205	1
34	Main Shaft Bearing-1	PEEK	1
35	Shaft Seal Cover	2205	1
36	Mechanical Seal	NBR	1
37	Flushing Valve Core	2507	1
38	Flushing Valve Spring	2507	1
39	O-Ring 35-3.0	NBR	1
40	O-Ring 50-2.0	NBR	1
41	Lifting Screw M10	316	1
42	Internal Hexagon Screw M12-60	316	2
43	Anti-Loose Nut M12	316	4

Advanced Technology/Reliable

THINKTANK

PROFESSIONAL | HIGH QUALITY | EXCELLENCE SERVICE

<https://rohrepumps.com>

PARITNER